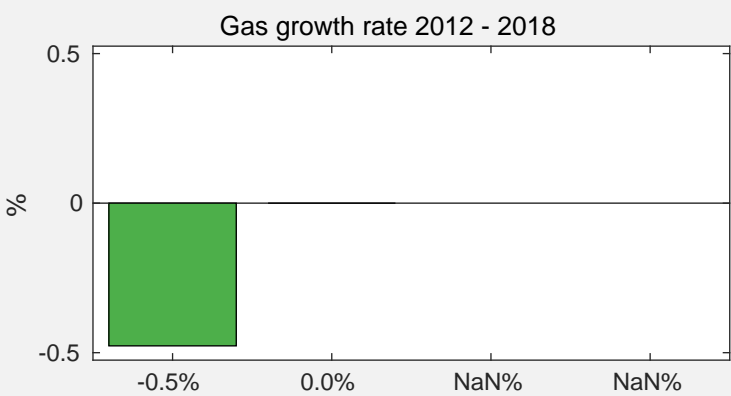
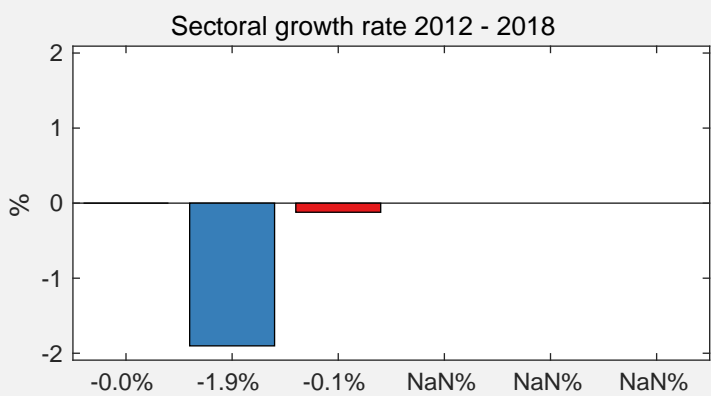
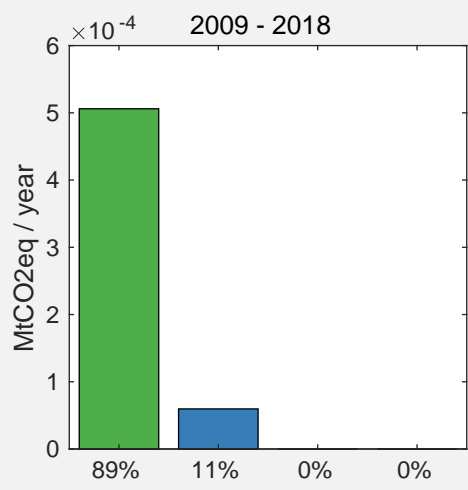
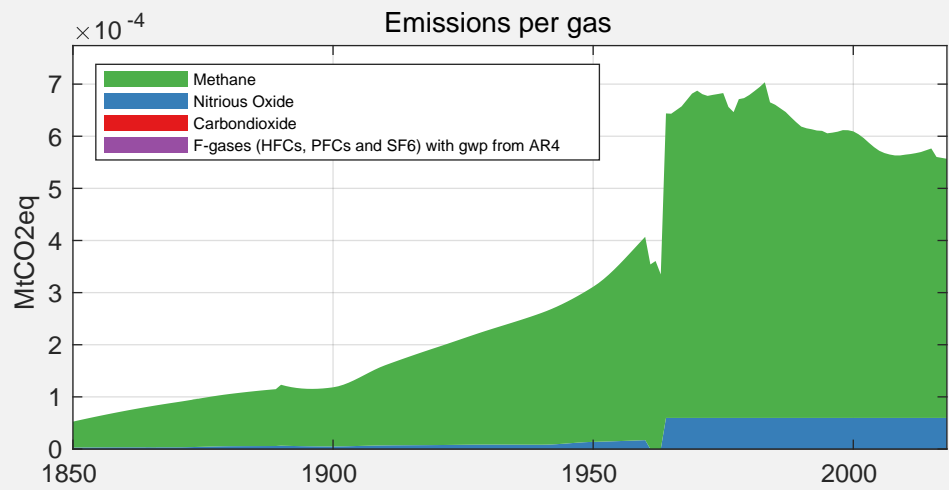
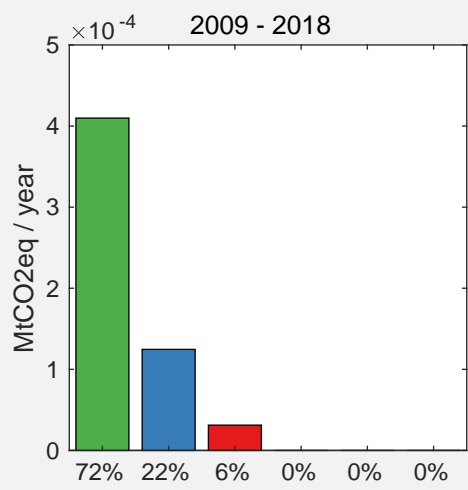
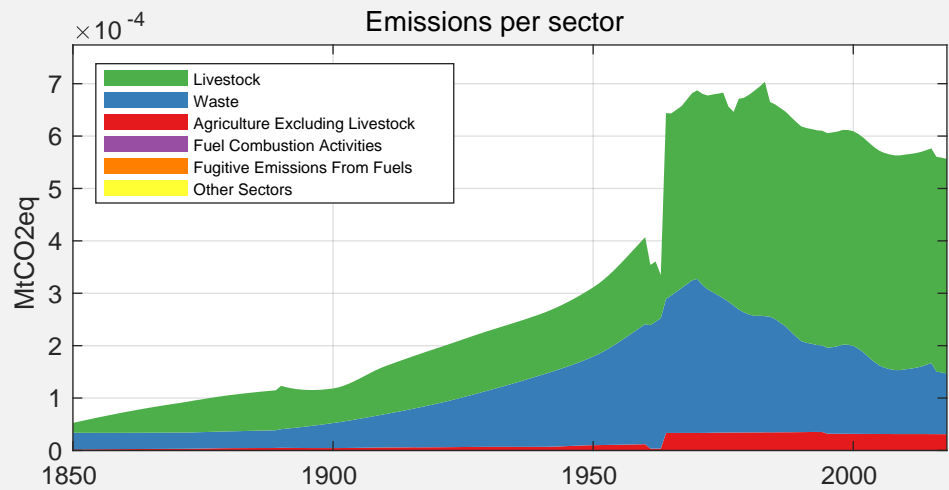


Country Facts (2018)

Population:	1.32 Thousand (rank 205)
GDP:	0.00 Million 2011 US\$ (rank 0)
GHG emissions:	0.56 kt CO ₂ eq (rank 207)
GHG / capita:	422.09 kg CO ₂ eq / Pers. (rank 205)
GHG / GDP:	0.00 kg CO ₂ eq / 2011 US\$ (rank 0)



Source for emissions data:

Gütschow, J.; Günther, A.; Jeffery, L.; Gieseke, R. (2021):
The PRIMAP-hist national historical emissions time series (1850-2018). v2.2
Zenodo. <https://doi.org/10.5281/zenodo.4479172>

Source for GDP and population data:

Gütschow, J. (2019): The PRIMAP-hist national historical
GDP and population time series (1850-2018). v2.2. beta 1
GFZ Data Services. <https://doi.org/10.5880/pik.2019.019> (v2.1)