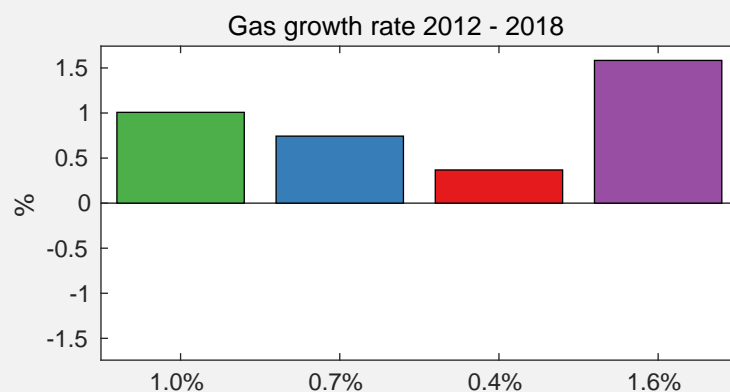
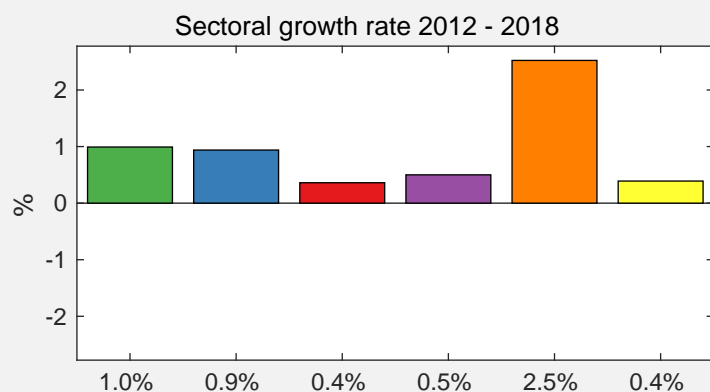
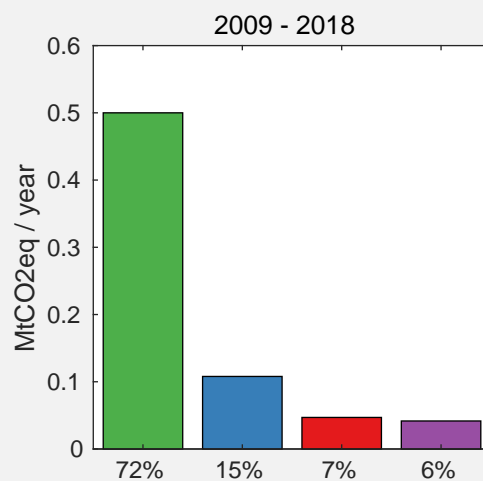
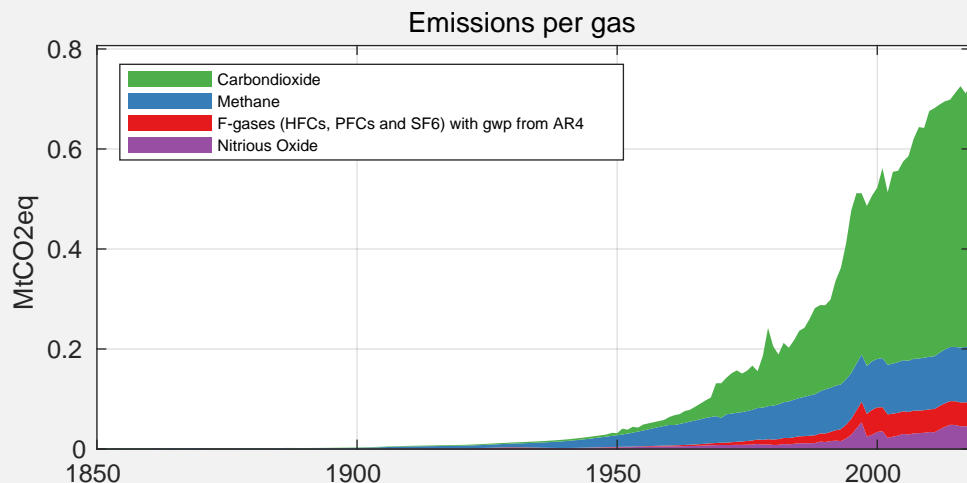
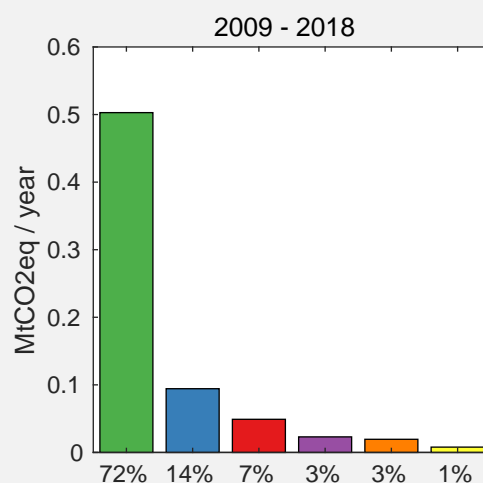
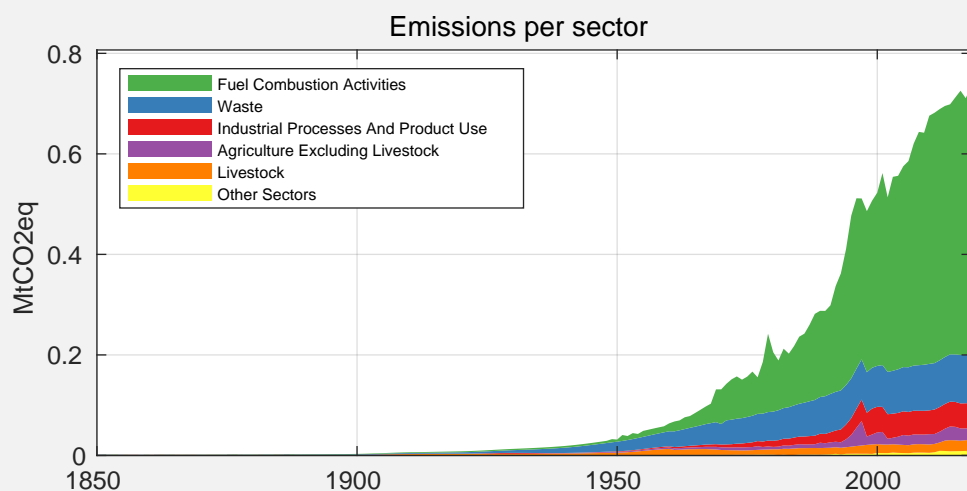


Country Facts (2018)

| | |
|-----------------------|---|
| Population: | 0.18 Million (rank 180) |
| GDP: | 2.22 Billion 2011 US\$ (rank 177) |
| GHG emissions: | 733.40 kt CO ₂ eq (rank 177) |
| GHG / capita: | 4.03 t CO ₂ eq / Pers. (rank 115) |
| GHG / GDP: | 0.33 kg CO ₂ eq / 2011 US\$ (rank 128) |



Source for emissions data:

Gütschow, J.; Günther, A.; Jeffery, L.; Gieseke, R. (2021):

The PRIMAP-hist national historical emissions time series (1850-2018). v2.2

Zenodo. <https://doi.org/10.5281/zenodo.4479172>

Source for GDP and population data:

Gütschow, J. (2019): The PRIMAP-hist national historical

GDP and population time series (1850-2018). v2.2. beta 1

GFZ Data Services. <https://doi.org/10.5880/pik.2019.019> (v2.1)