



ipcc

INTERGOVERNMENTAL PANEL ON climate change



AR5: Overview and Structure of the WG III Contribution

Scoping Meeting for the Synthesis Report (SYR)

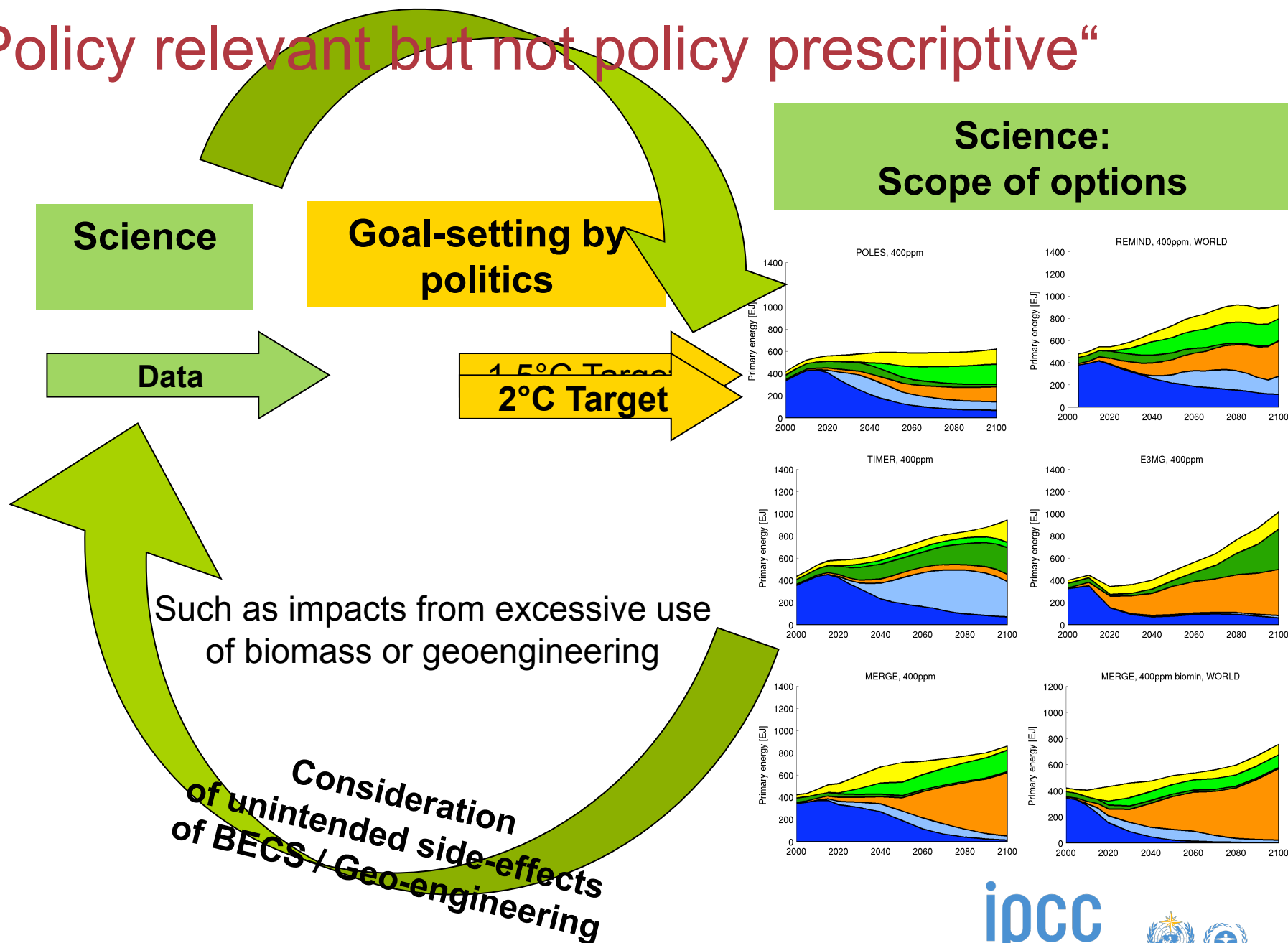
25-27 August 2010, Liege, Belgium

Prof. Dr. Ottmar Edenhofer

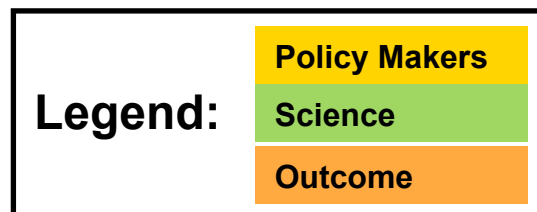
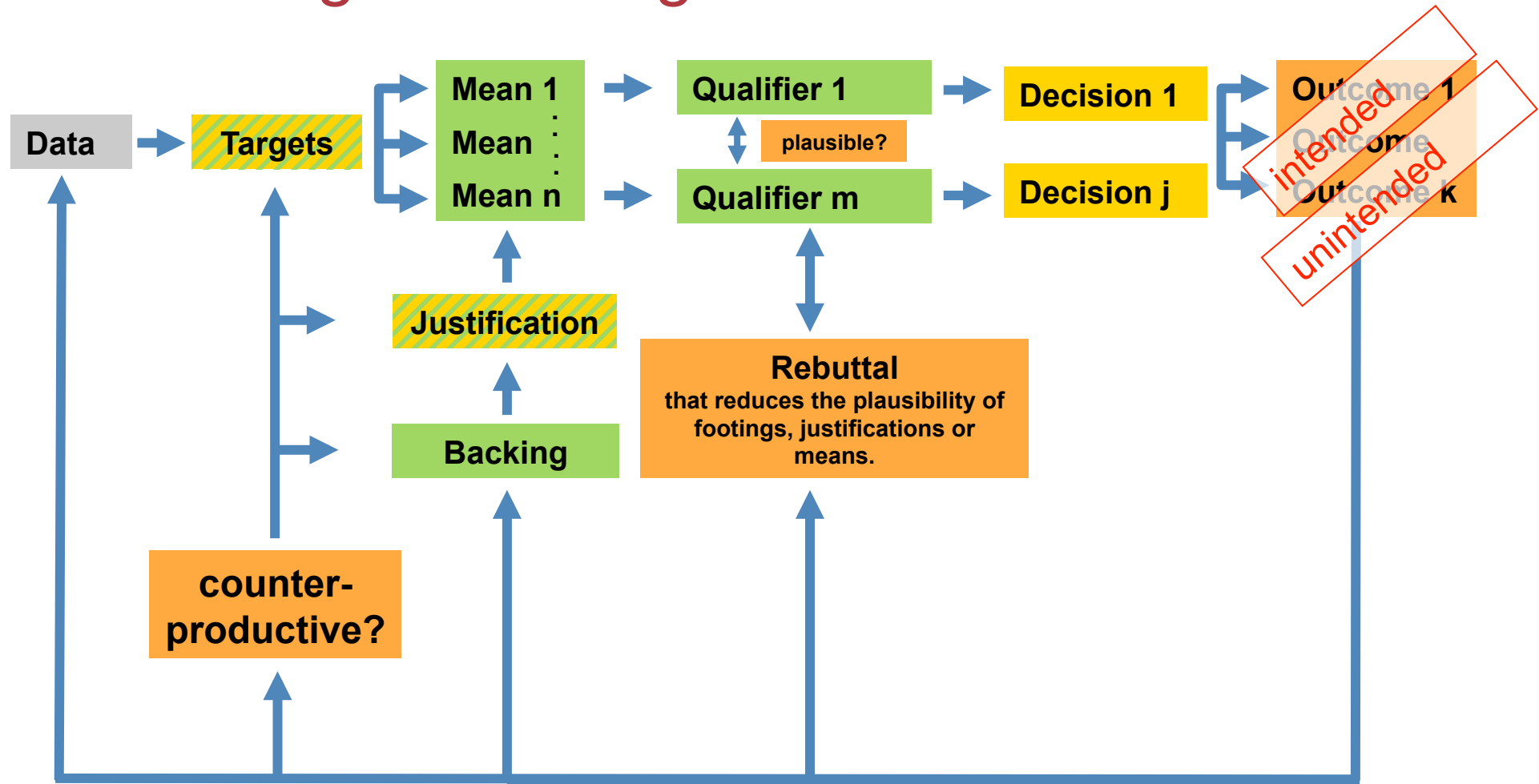
Christoph von Stechow



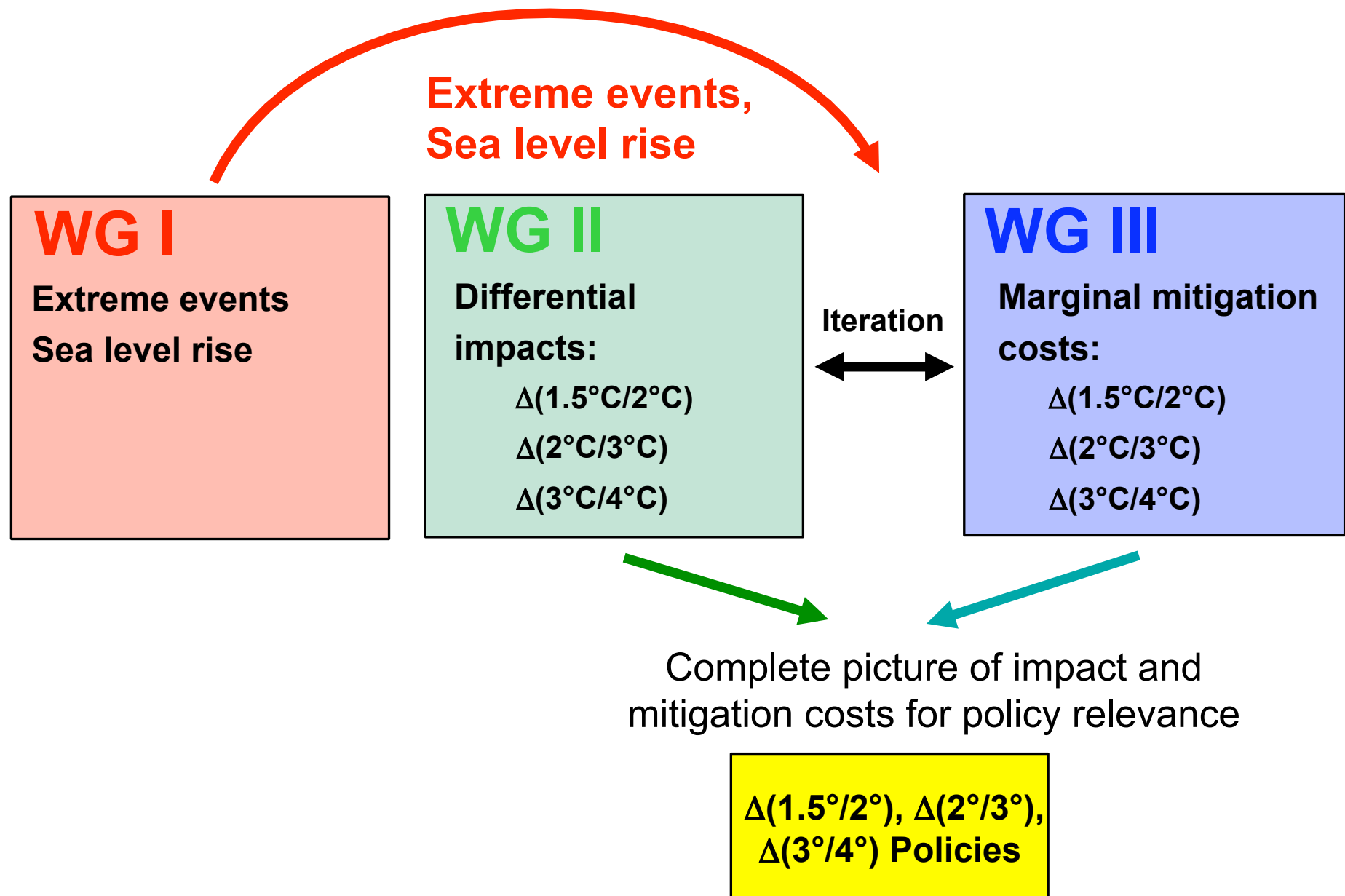
“Policy relevant but not policy prescriptive”



The Pragmatic-Enlightened Model



Implications for the Scenario Process

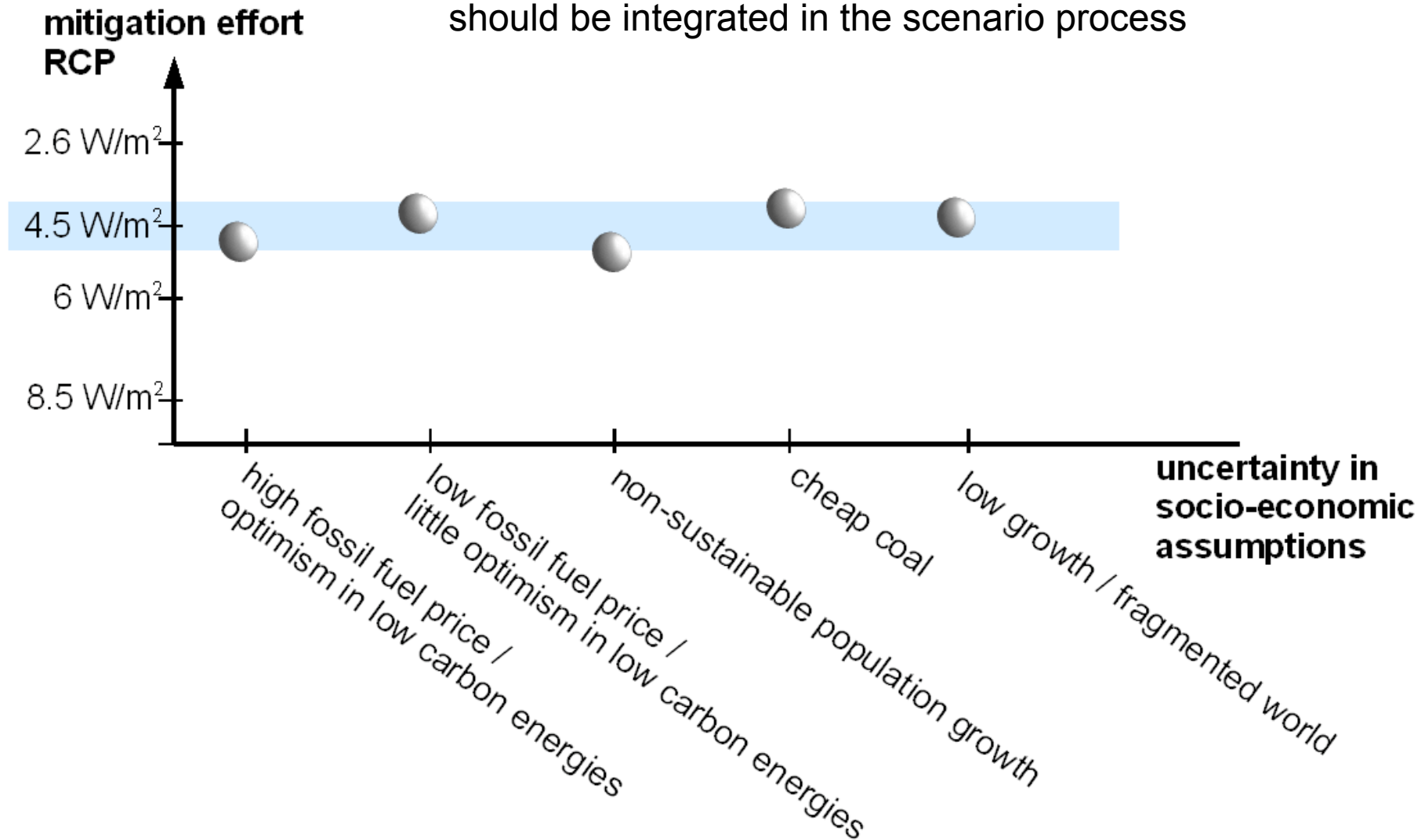


The Research Challenge

- Low Stabilisation Scenarios which identify the technical and institutional requirements
- Exploring the costs, benefits and risks of different mitigation options
- Identifying differential impacts and develop a classification of risks comprising tipping points in the natural environment and also in society.
- Second best: More realistic policy cases through consideration of effects of fragmented carbon markets & technology failures

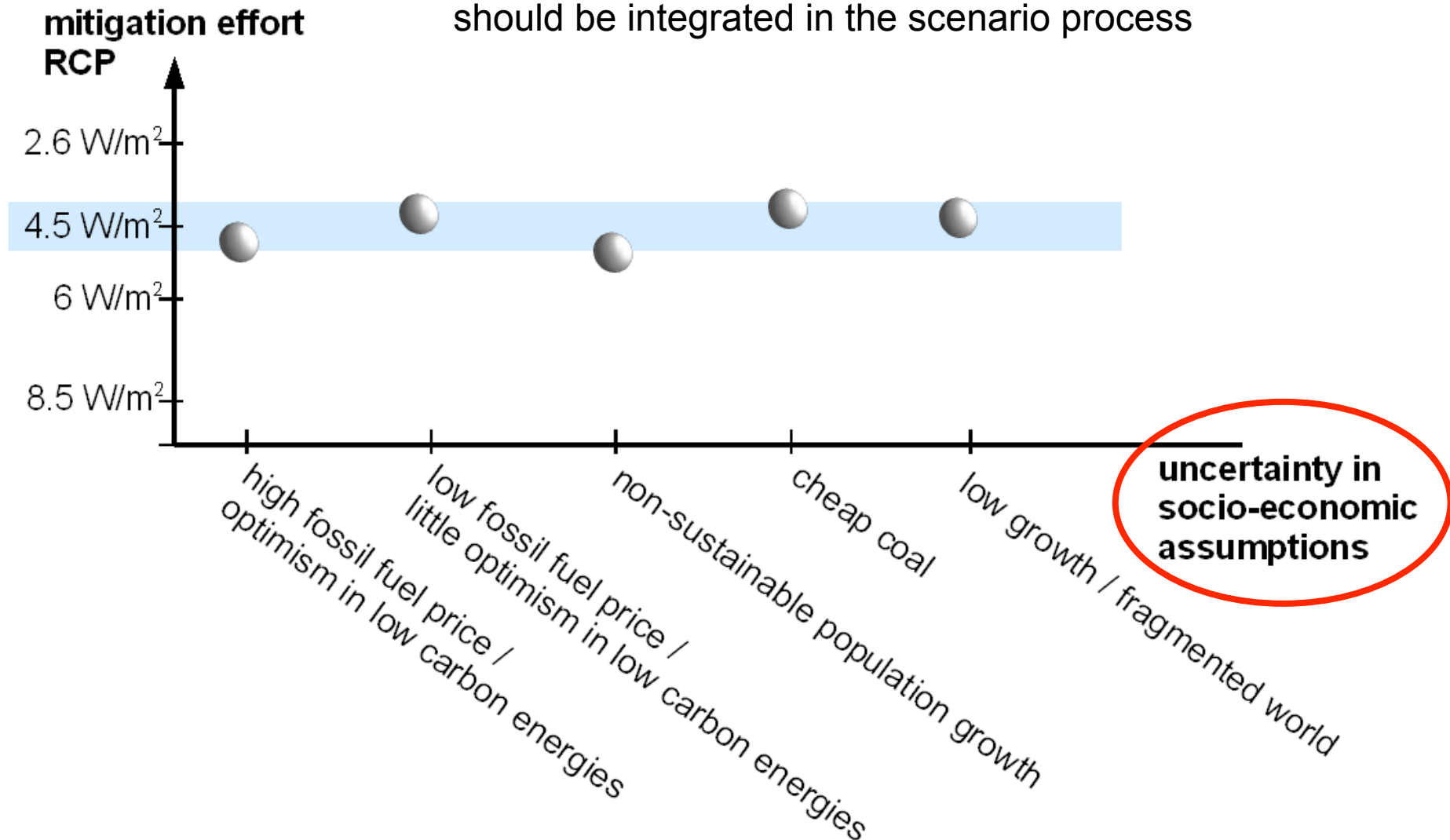
Assess Scenarios in AR5

Idea for the conceptualization of scenarios, which should be integrated in the scenario process



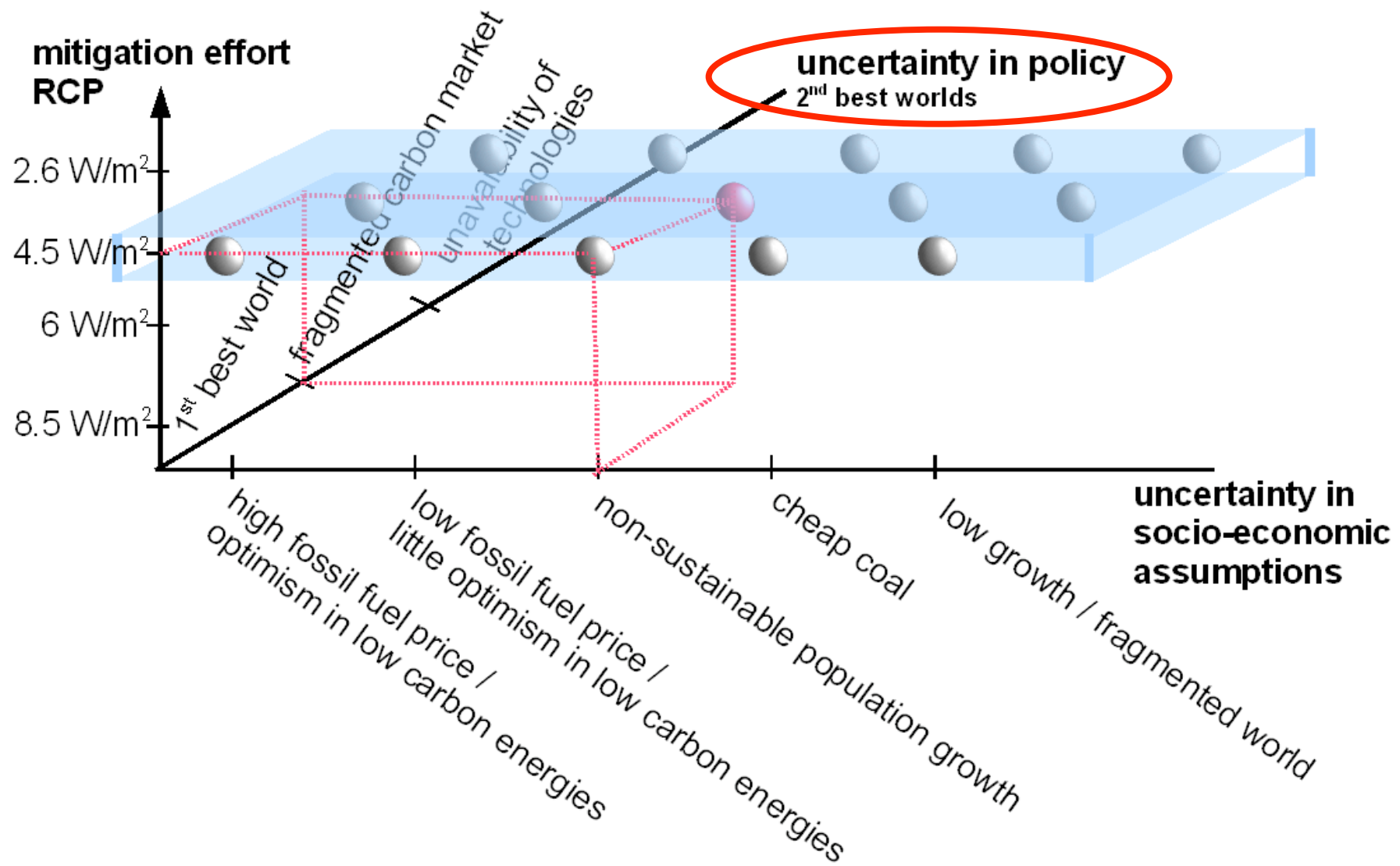
Assess Scenarios in AR5

Idea for the conceptualization of scenarios, which should be integrated in the scenario process

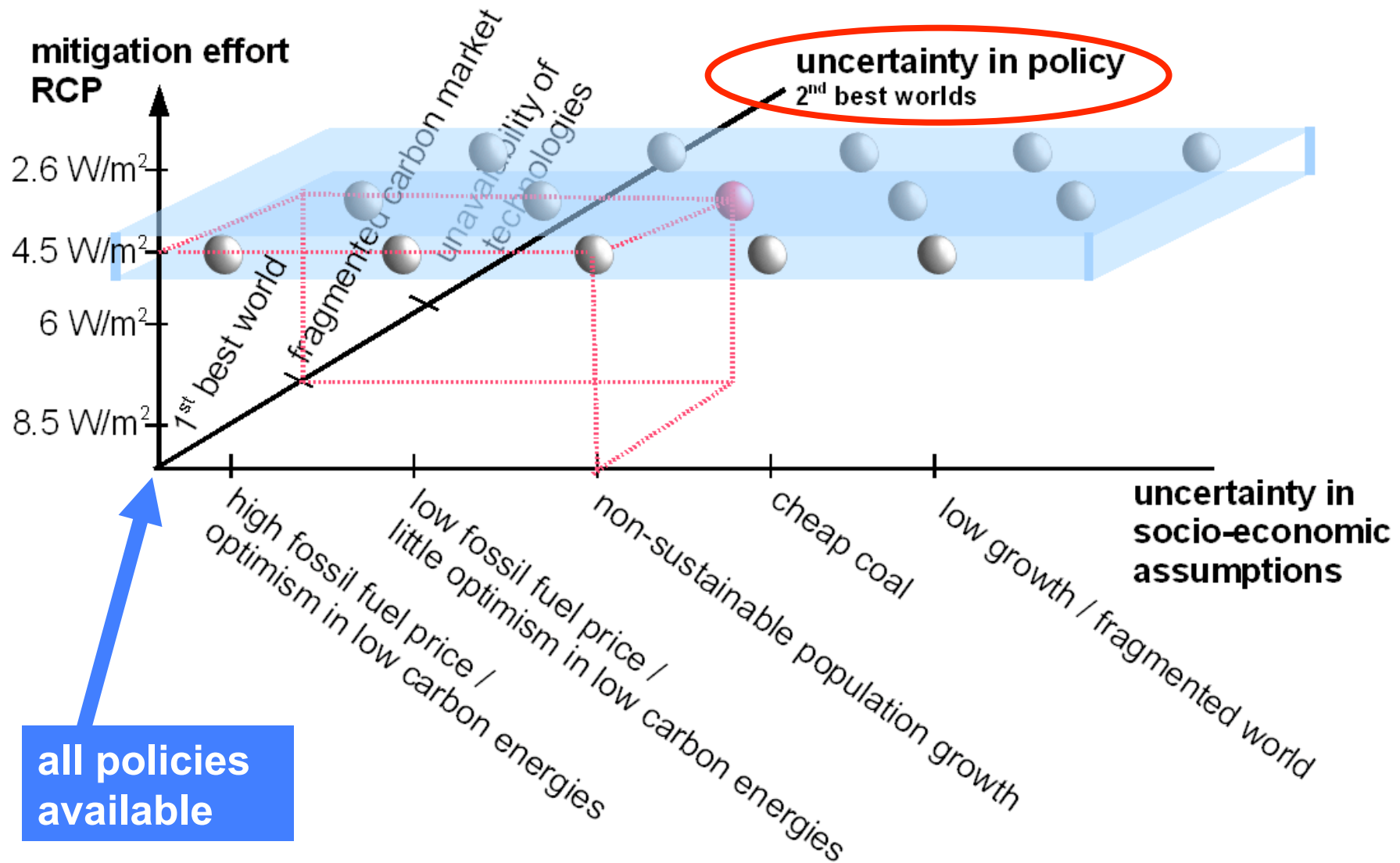


Socio-economic assumptions should be self-consistent

Assess Scenarios in AR5



Assess Scenarios in AR5



The Parts of the WG III AR5 Outline

Part I
Introduction

Part II
Framing Issues

Part III
Pathways for Mitigating Climate Change

Part IV
Assessment of Policies, Institutions and Finance

AR5 WG III Outline

I: Introduction

1. Introductory Chapter

II: Framing Issues

- 2. Integrated Risk and Uncertainty Assessment of Climate Change Response Policies**
- 3. Social, Economic and Ethical Concepts and Methods**
- 4. Sustainable Development and Equity**

III: Pathways for Mitigating Climate Change

- 5. Drivers, Trends and Mitigation**
- 6. Assessing Transformation Pathways**
- 7. Energy Systems**
- 8. Transport**
- 9. Buildings**
- 10. Industry**
- 11. Agriculture, Forestry and Other Land Use (AFOLU)**
- 12. Human Settlements, Infrastructure and Spatial Planning**

IV: Assessment of Policies, Institutions and Finance

- 13. International Cooperation: Agreements and Instruments**
- 14. Regional Development and Cooperation**
- 15. National and Sub-national Policies and Institutions**
- 16. Cross-cutting Investment and Finance Issues**

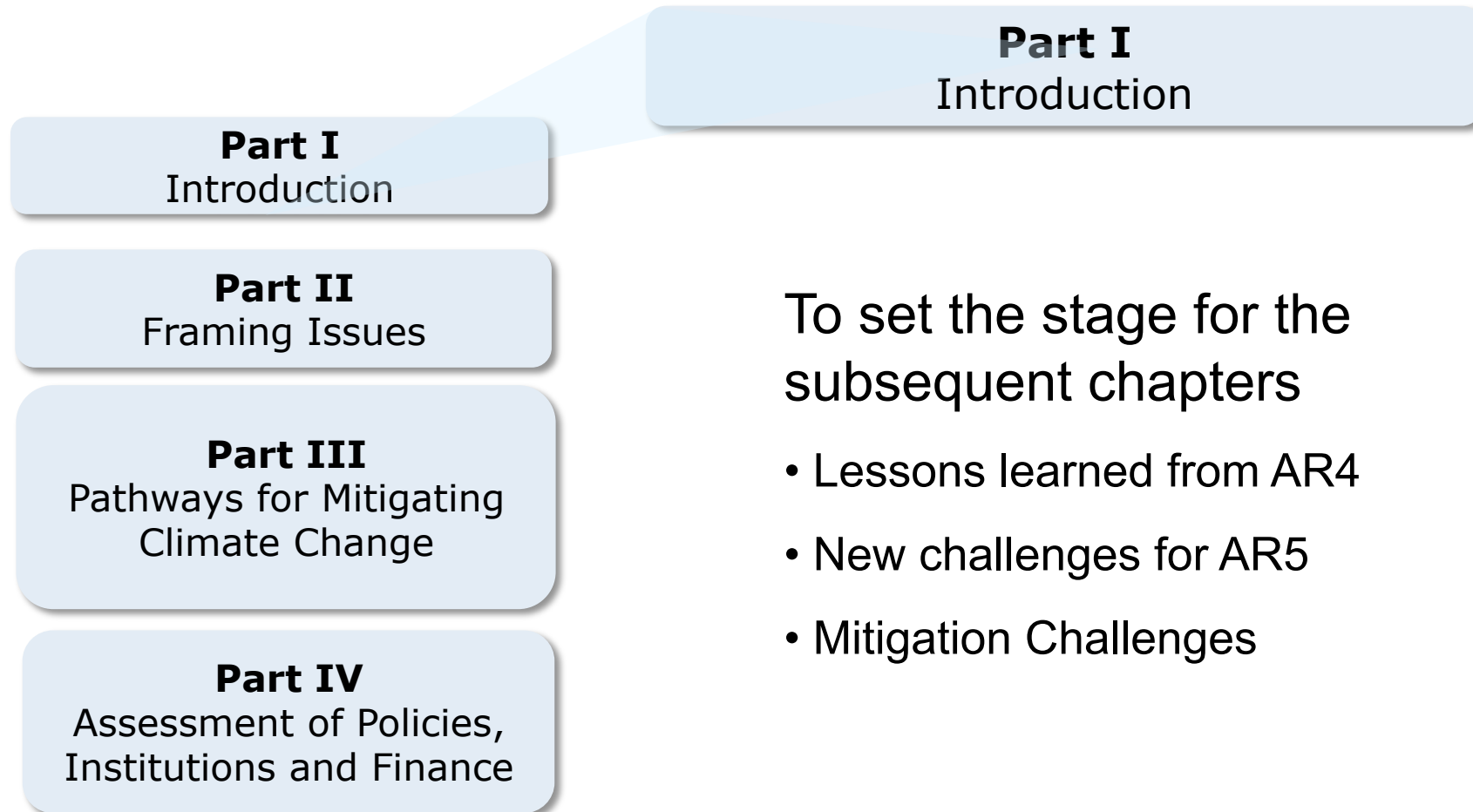
SYR outline – iii. Response

Solution space	1
Risk Management & response (incl. Art 2)	2, 6
Effect of existing climate-related policies	13-15
Adaptation options	4, 7-12, 15
Mitigation options	overarching
Co-benefits & externalities	3, 5-12
Bottom-up & top-down Integration	6, 7-10
GHG metrics	3, 5
Multi-metric valuations	3, 5
Reduction of scientific uncertainty	overarching
Investment in R&D	3, 5, 6, 15, 16
Geoengineering	5
Equity & sustainable development dimensions	3, 4, 6, 14
Interactions: adaptation, mitigation & development	4, 7-12, 14, 15, 16

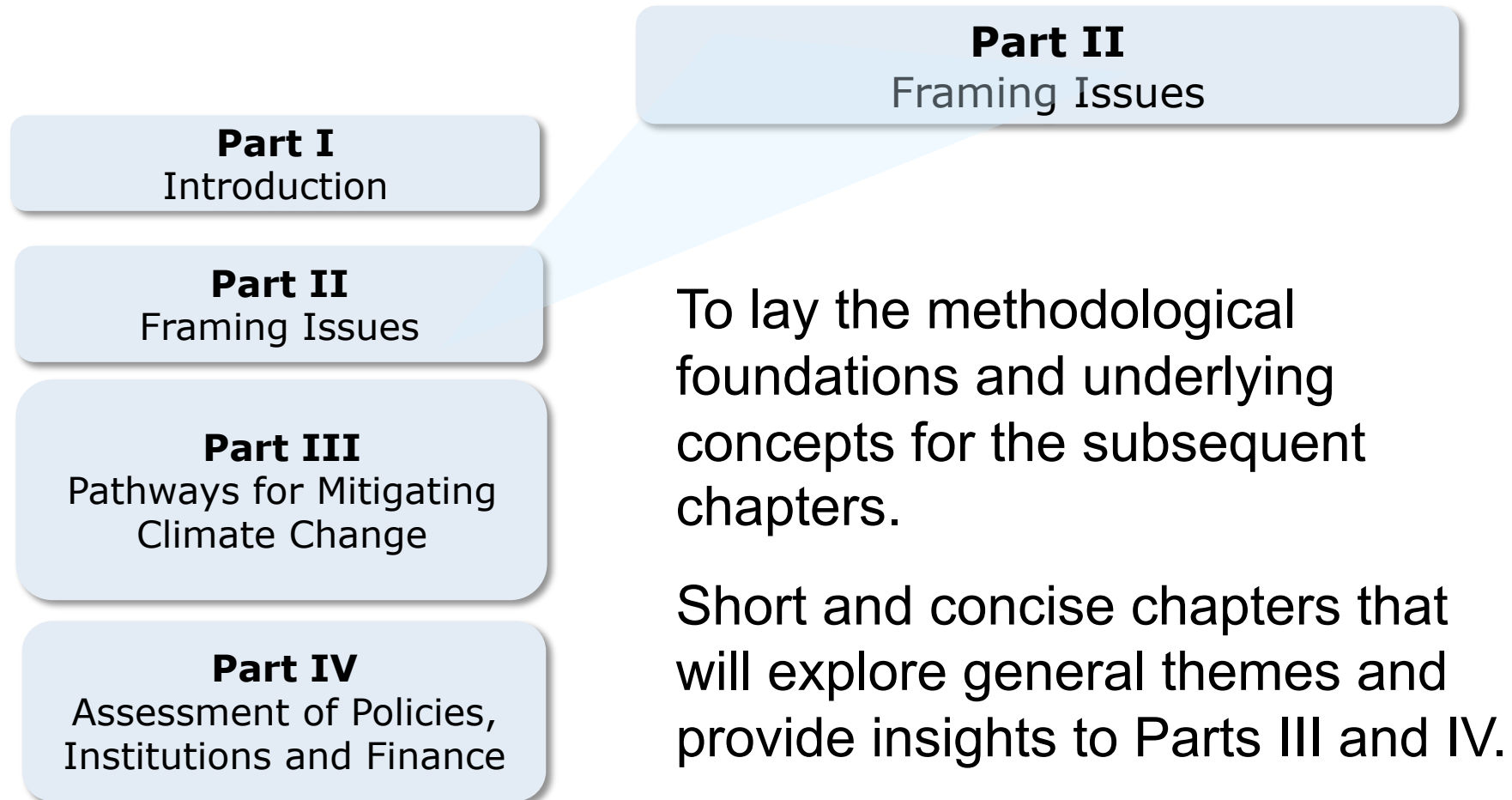
SYR outline – iv. Transition & Transformation

Pace and scale (dynamics)	6
Equity dimensions, time & space scales	3, 4
Development pathways & global transition	4, 6, 14
Behavioural & societal changes	4, 5
Benefits & costs (including co-benefits)	3, 5-12
Governance and institutional arrangements	13-16
Investment needs	6, 13-15, 16 ,
Development issues	4, 6, 14 , 15

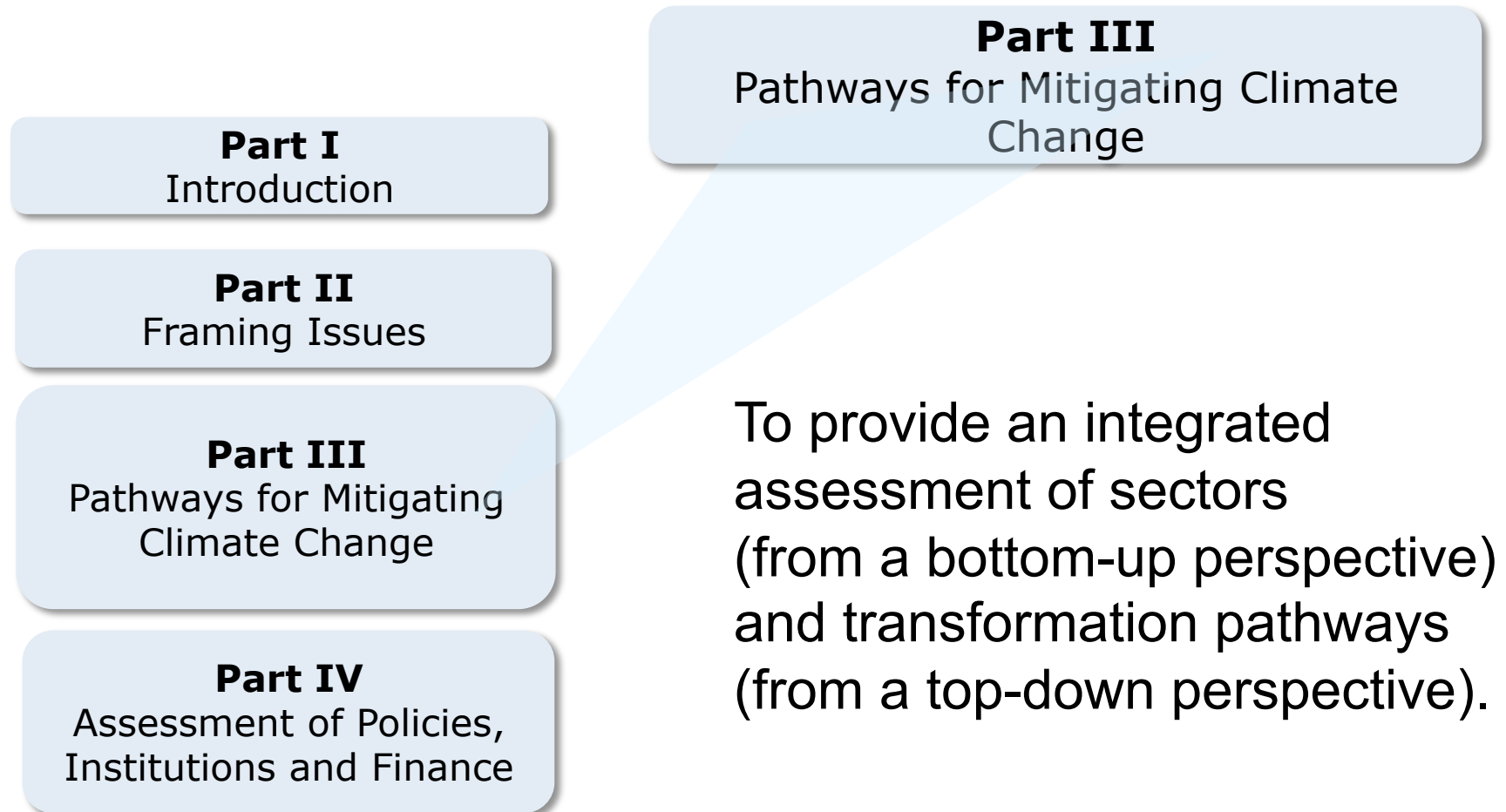
The Philosophy of the WG III AR5 Outline



The Philosophy of the WG III AR5 Outline



The Philosophy of the WG III AR5 Outline



The Philosophy of the AR5 WG III Outline

I: Introduction

1. Introductory Chapter

II: Framing Issues

2. Integrated Risk and Uncertainty Assessment of Climate Change Response Policies

3. Social, Economic and Ethical Concepts and Methods

4. Sustainable Development and Equity

Chp 6: Assessing Transformation Pathways

Scenarios are the backbone of consistency between WG II and WG III.

IV: Assessment of Policies, Institutions and Finance

13. International Cooperation: Agreements and Instruments

14. Regional Development and Cooperation

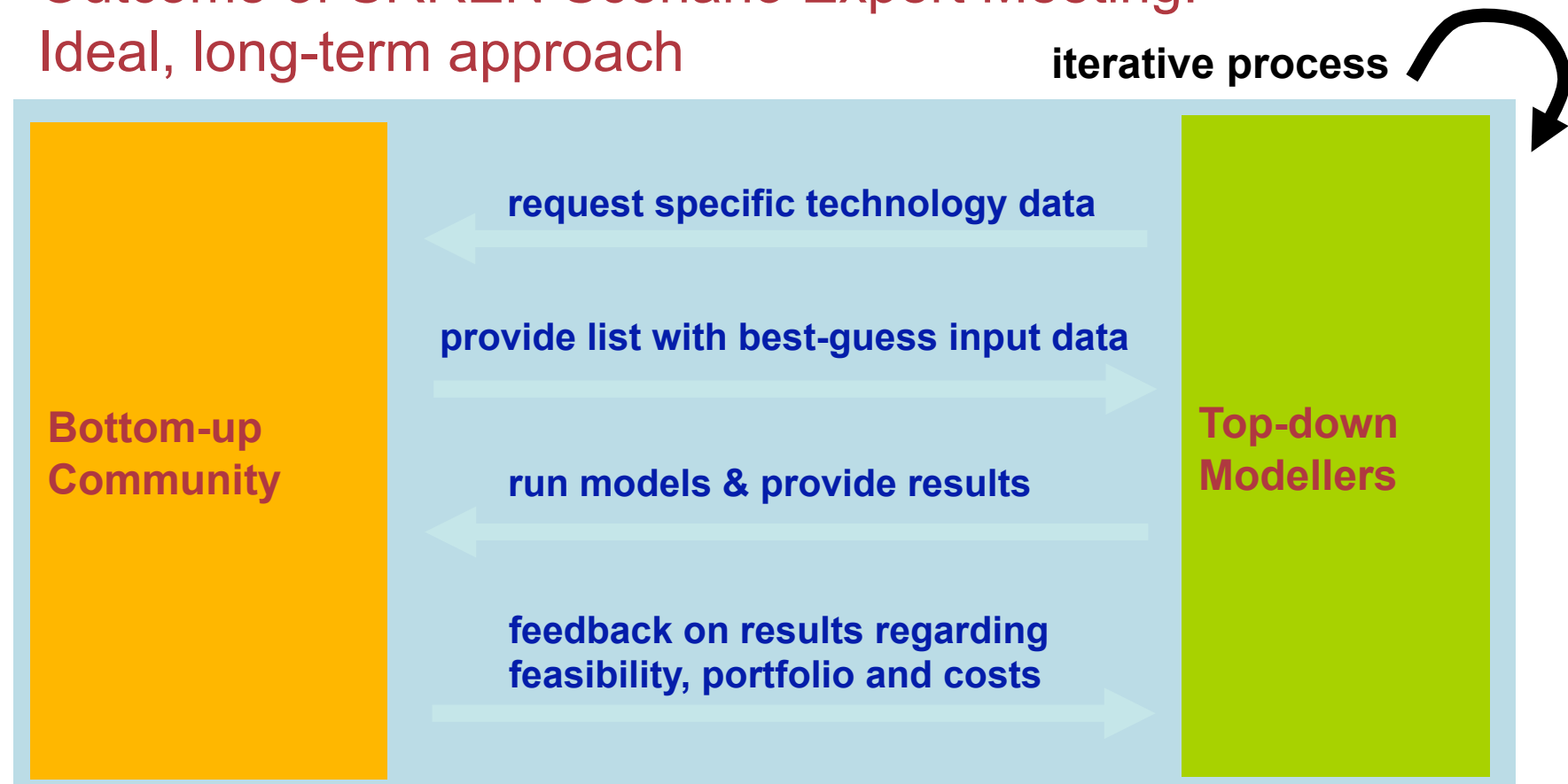
15. National and Sub-national Policies and Institutions

16. Cross-cutting Investment and Finance Issues

AR5 Run-up:

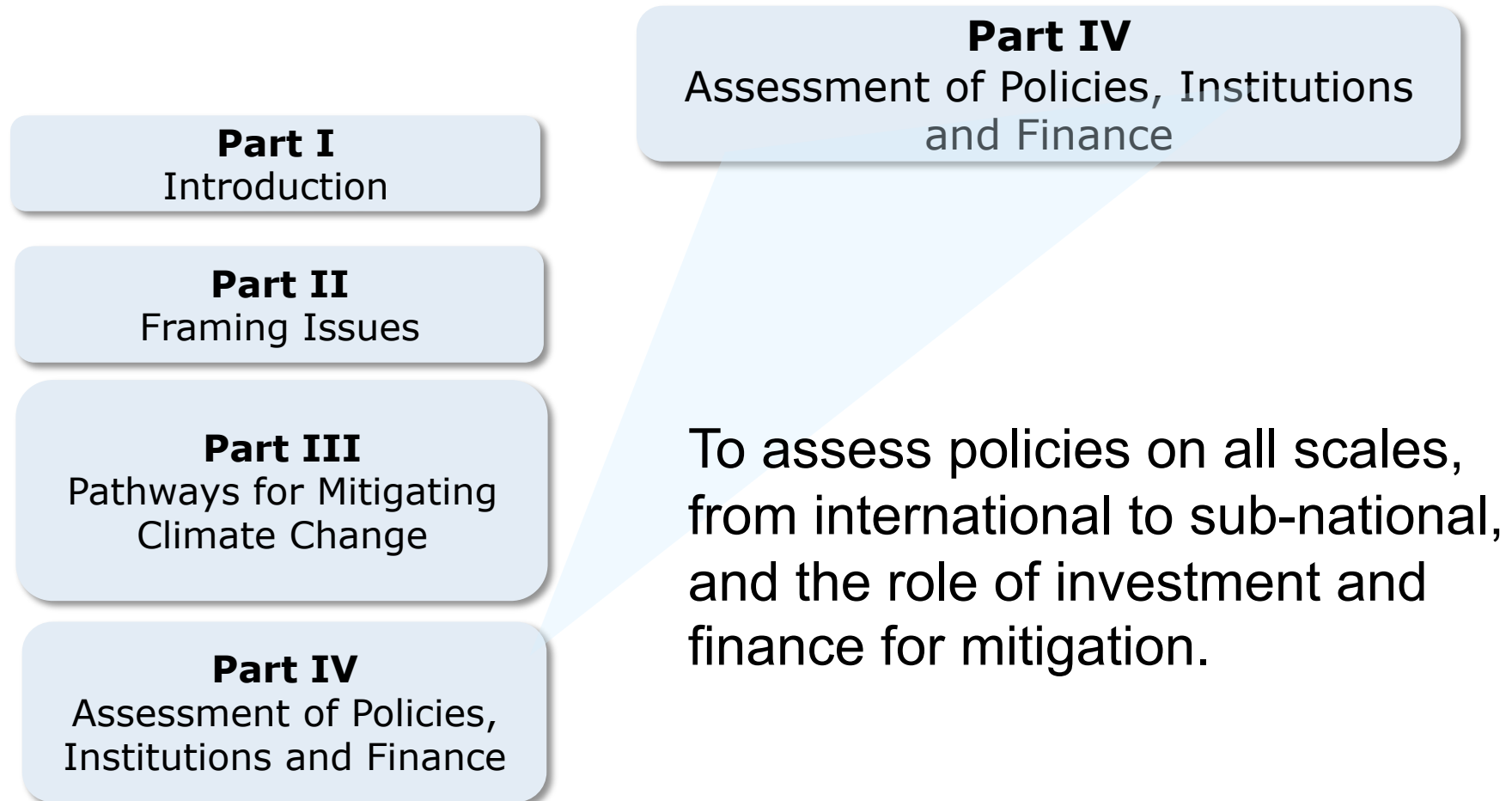
Bottom-up – Top-down Interaction

Outcome of SRREN Scenario Expert Meeting:
Ideal, long-term approach

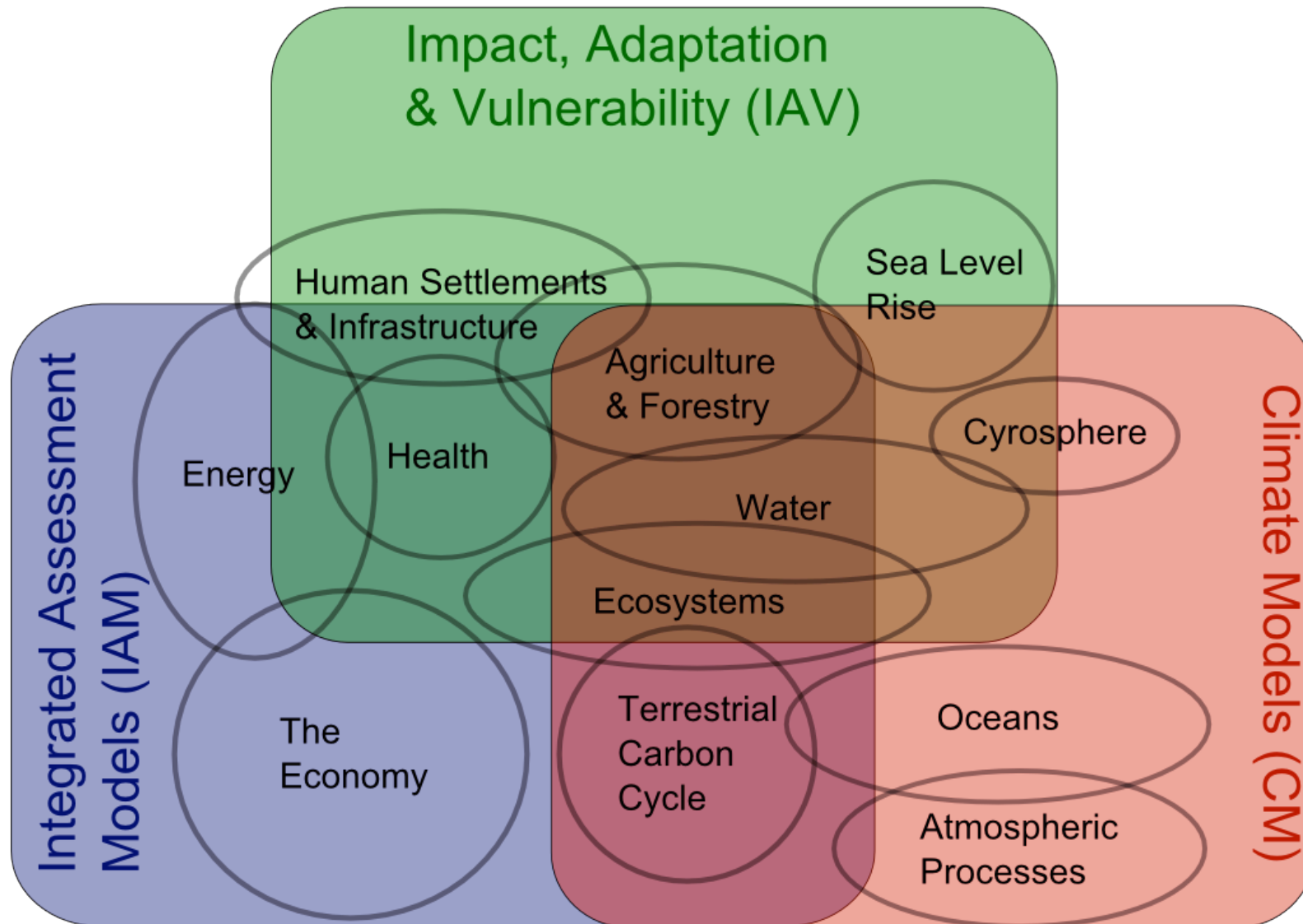


Goal: More realistic representation of policy space.

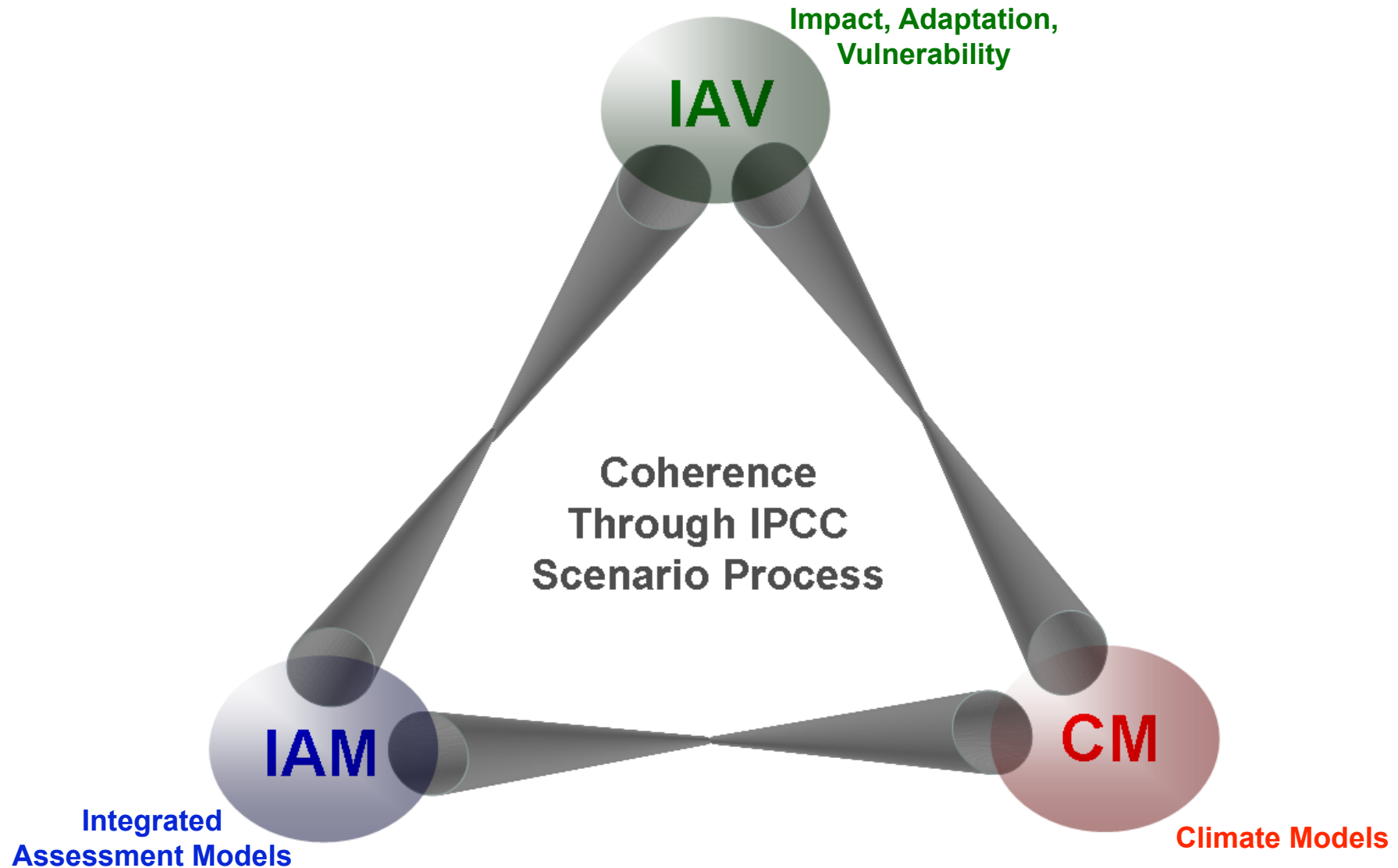
The Philosophy of the WG III AR5 Outline



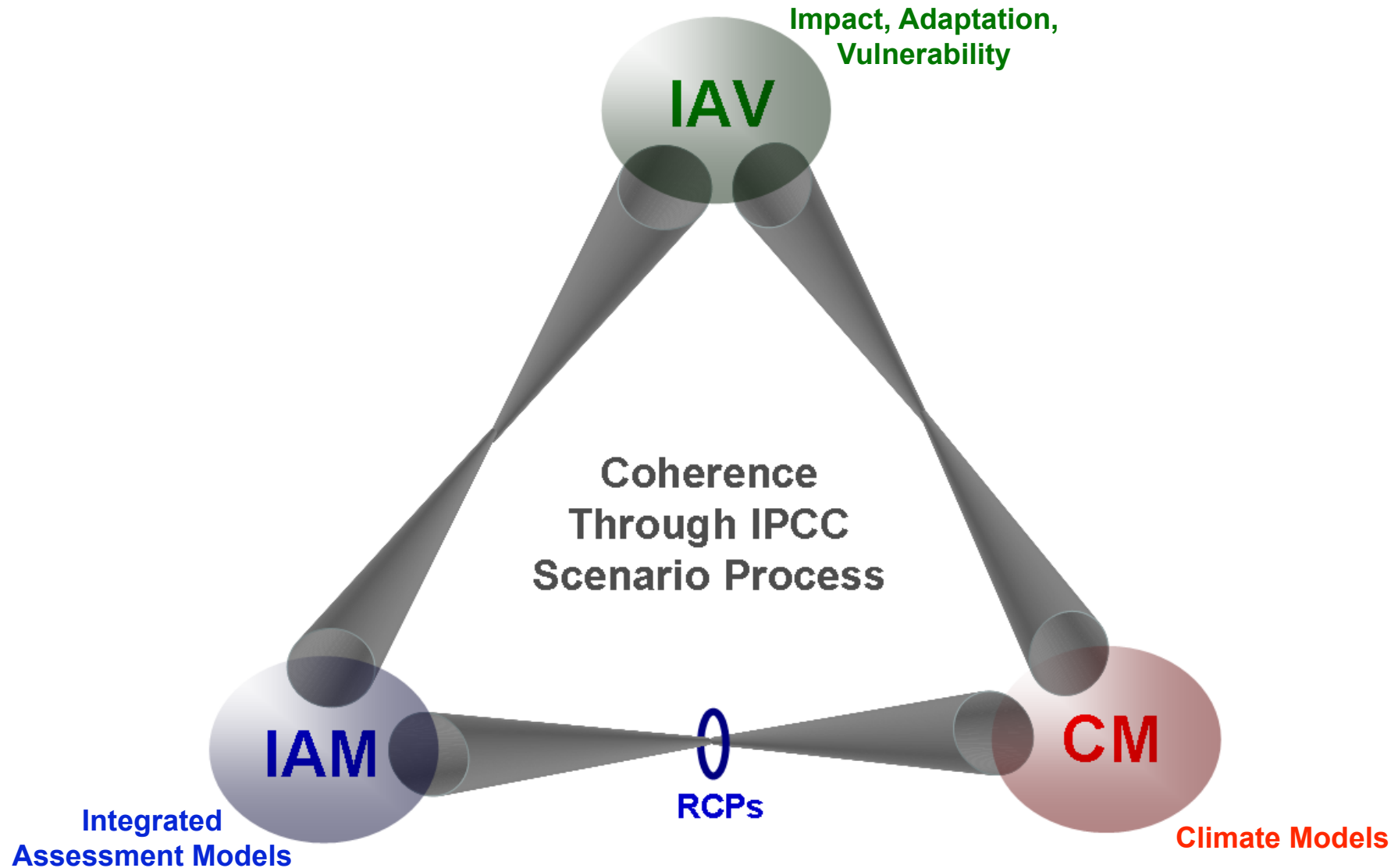
Assessment Communities



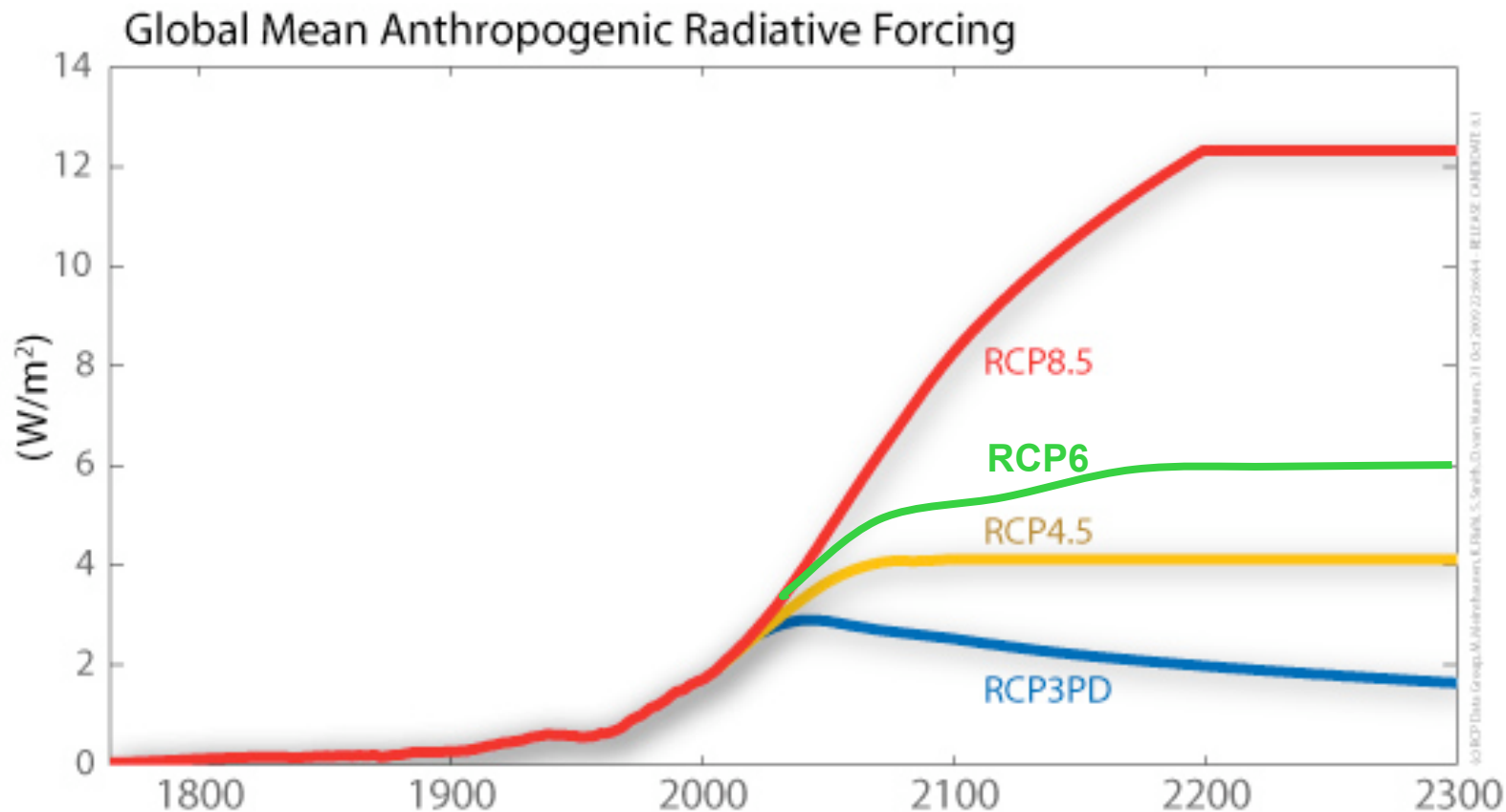
IPCC Scenario Process



IPCC Scenario Process



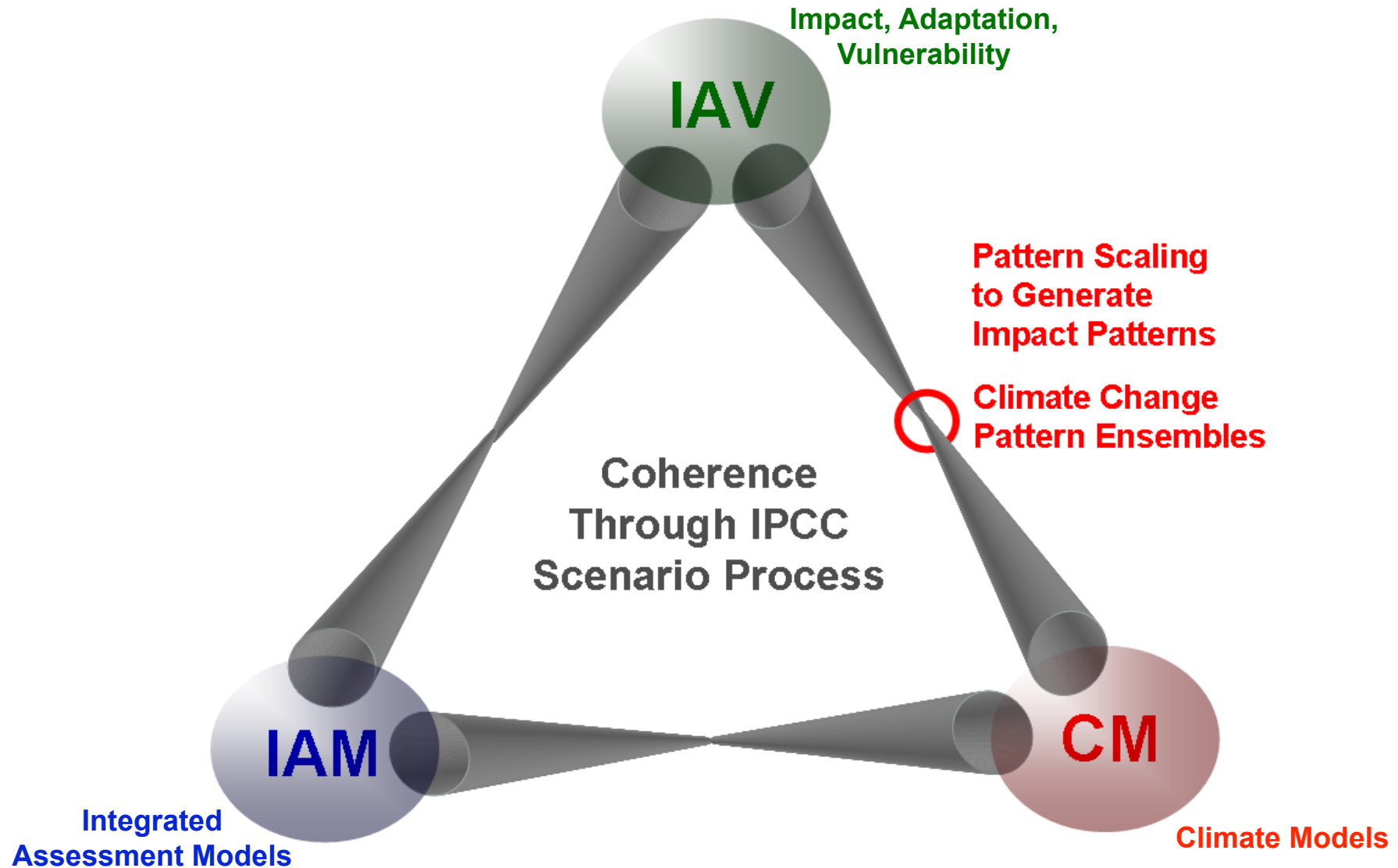
Representative Concentration Pathways (RCPs)



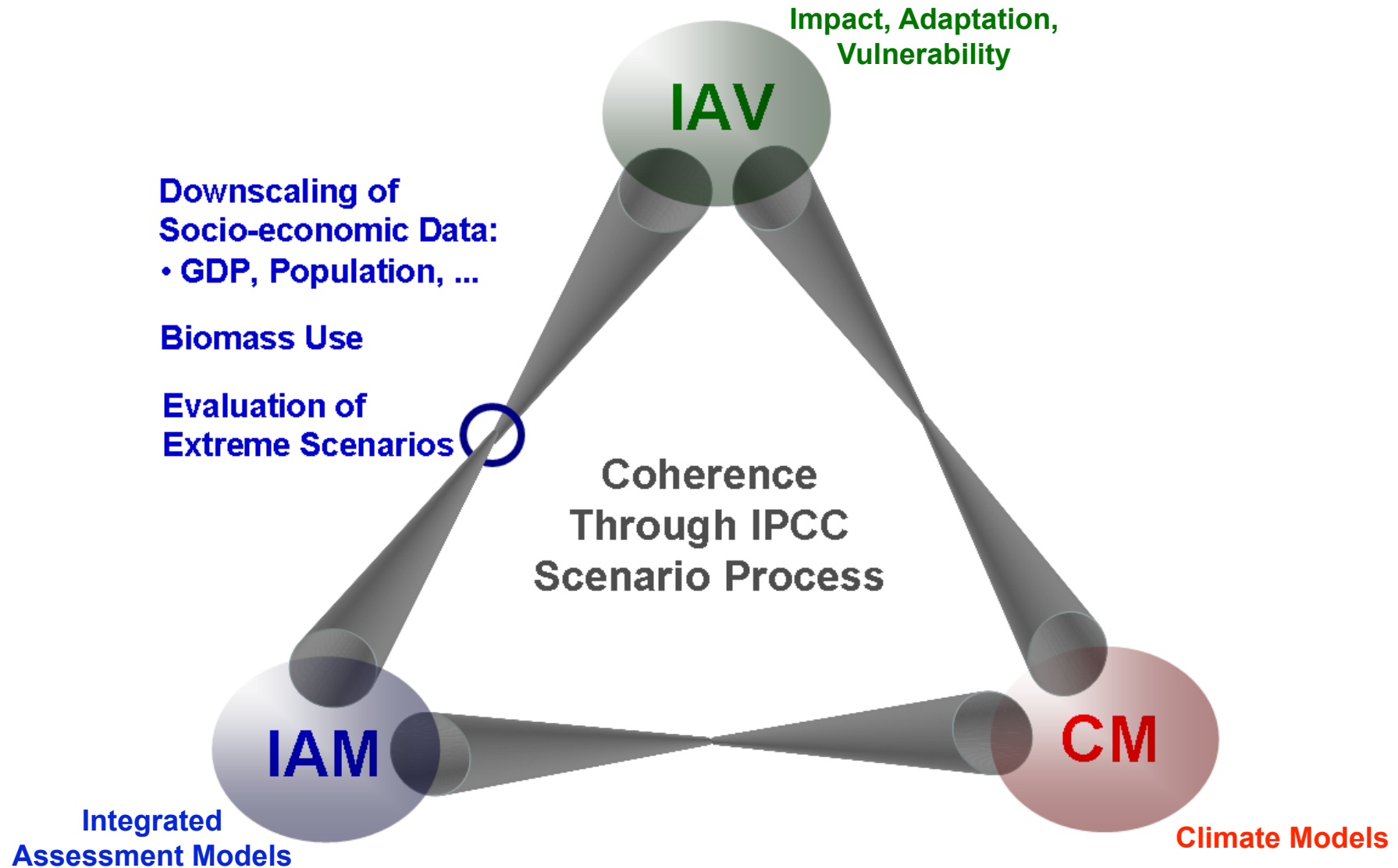
All Data available at

<http://www.pik-potsdam.de/~mmalte/rcps/>

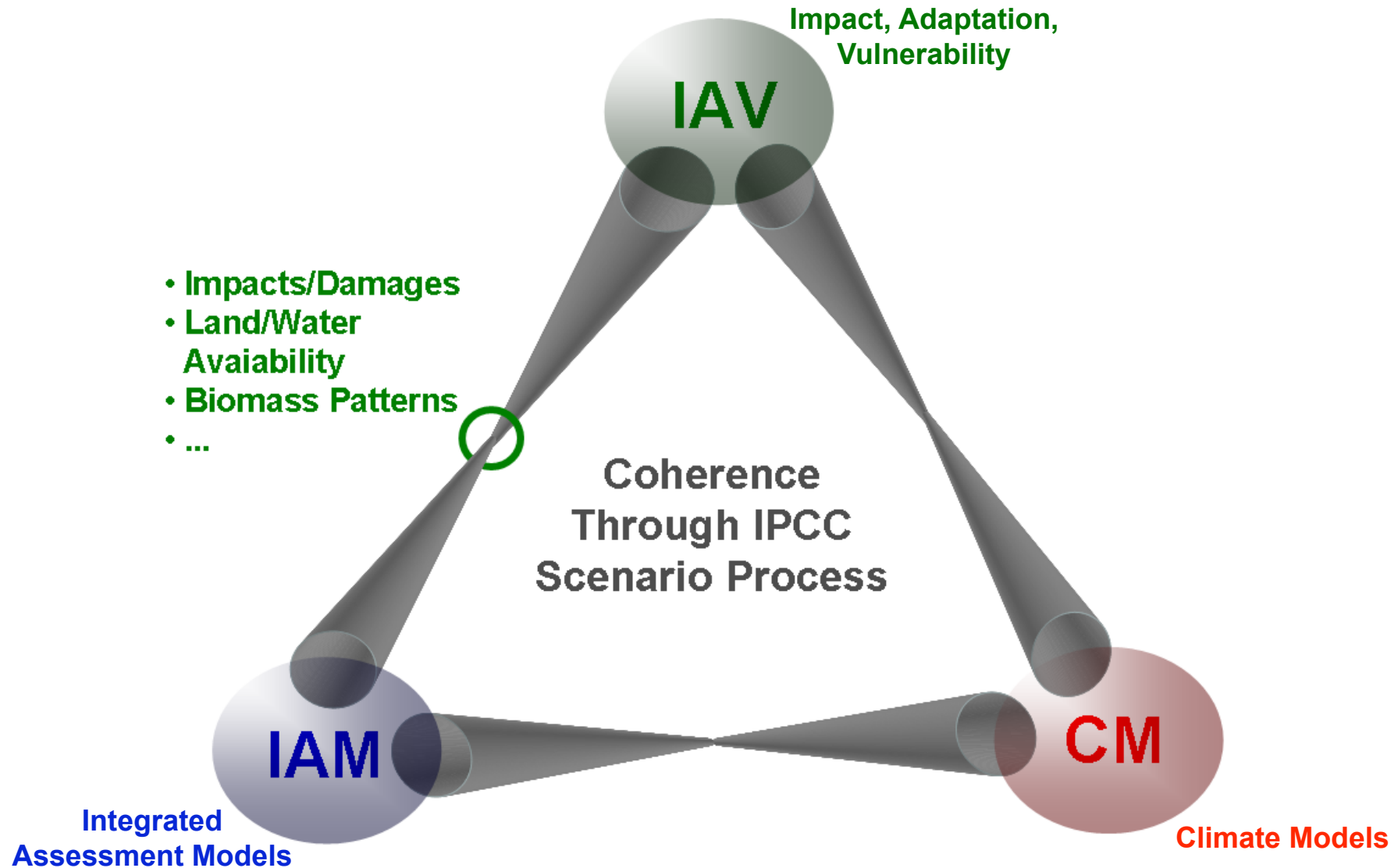
IPCC Scenario Process



IPCC Scenario Process



IPCC Scenario Process



Final Remark

The IPCC is the honest broker between experts and decision makers in business, politics and civil society.

The IPCC should be policy relevant without being policy prescriptive.