

CAPACITY BUILDING AND KNOWLEDGE TRANSFER

EPICC Project Closing Workshop 2022:
Strengthening Resilience Against Climate Change
22nd - 23rd June, 2022, Dar es Salaam, Tanzania

Mechthild Becker, Getrude Clement, Shamim Zawadi

SESSION OVERVIEW

- › Looking Back
- › Looking Ahead
- › An EPIC(C) World Café



Supported by:



based on a decision of the German Bundestag



Celebrating 30 years of integrated climate impact research at the Potsdam Institute.

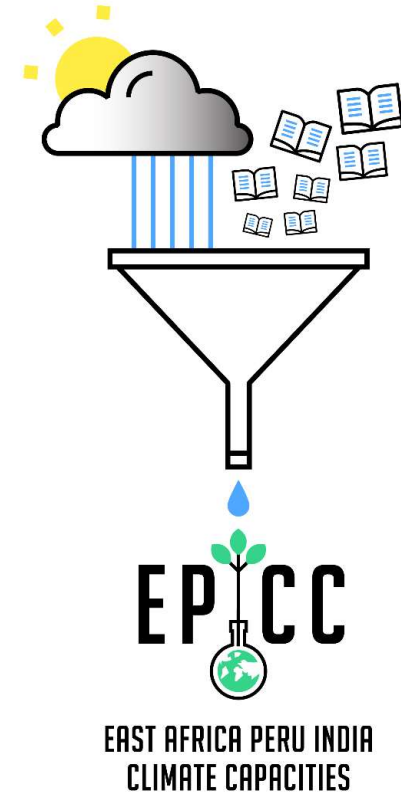
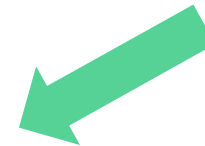
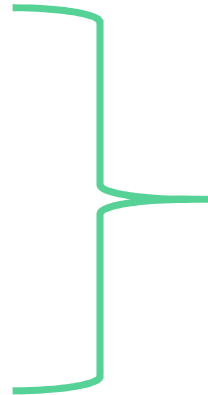


LOOKING BACK: EPICC IN TANZANIA

- › Climate
- › Hydrology and Water Resources
- › Agriculture
- › Migration



Capacity Building and Knowledge
Transfer, incl. Visualization



Supported by:



based on a decision of the German Bundestag



Celebrating 30 years of
integrated climate impact research
at the Potsdam Institute.



LOOKING BACK: CAPACITY BUILDING AND KNOWLEDGE TRANSFER IN TANZANIA



- Make information and services available and accessible to different types of users
- Co-production of knowledge
- Bridging the gap: translation of scientific results into policy-relevant information

Supported by:

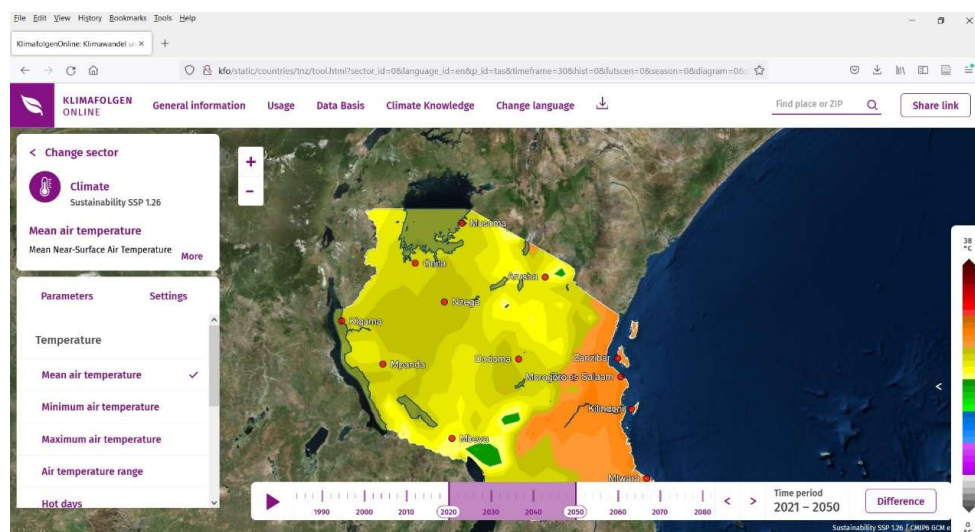
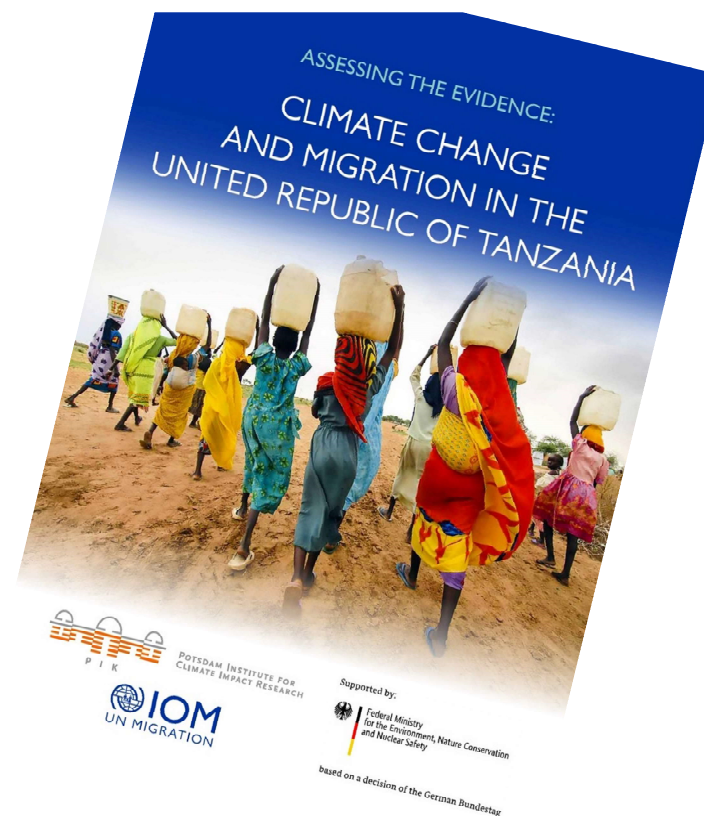


based on a decision of the German Bundestag



Celebrating 30 years of
integrated climate impact research
at the Potsdam Institute.





www.nature.com/scientificreports

scientific reports

OPEN Robustly forecasting maize yields in Tanzania based on climatic predictors

Rahel Laudien^{1,2}, Bernhard Schauburger¹, David Makowski² & Christoph Gornott^{1,3}

Seasonal yield forecasts are important to support agricultural development programs and can contribute to improved food security in developing countries. Despite their importance, no

LOOKING AHEAD: BUILDING CLIMATE-RESILIENT FUTURES WITH GETRUDE



Source: <https://www.unicef.org/tanzania/press-releases/unicef-youth-advocate-climate-tells-un-general-assembly-we-expect-more-words-paper>

“We expect more than words on paper and promises.”

Getrude Clement at the Signing Ceremony for the Paris Agreement on Climate Change at the United Nations Headquarters in 2016

Supported by:



based on a decision of the German Bundestag



Celebrating 30 years of integrated climate impact research at the Potsdam Institute.



LOOKING AHEAD: BUILDING CLIMATE-RESILIENT FUTURES WITH SHAMIM



Supported by:



based on a decision of the German Bundestag



INTERNATIONAL
CLIMATE
INITIATIVE



Celebrating 30 years of
integrated climate impact research
at the Potsdam Institute.



LOOKING AHEAD: BUILDING CLIMATE-RESILIENT FUTURES IN TANZANIA

- › What do you **take home** from this workshop?
- › And what is your **homework for us**?

Supported by:



based on a decision of the German Bundestag



Celebrating 30 years of
integrated climate impact research
at the Potsdam Institute.



AN EPIC(C) WORLD CAFÉ

- › What I take home from this workshop: thought, insights, new connections, etc.
- › Your thoughts on the new agroforestry project: *“Scaling agroforestry for holistic climate resilience-building in rural Tanzania (SCARF)”*
- › Your reflections and ideas for youth engagement in Tanzania
- › Explore ClimateImpactsOnline

Supported by:



based on a decision of the German Bundestag



Celebrating 30 years of integrated climate impact research at the Potsdam Institute.





Asante sana!

Mechthild Becker

Getrude Clement

Shamim Zawadi

Supported by:



based on a decision of the German Bundestag



Celebrating 30 years of
integrated climate impact research
at the Potsdam Institute.



- › <https://www.youtube.com/watch?v=qKNwR4nLLo8>
- › <http://kfo.pik-potsdam.de/>

Supported by:



based on a decision of the German Bundestag



INTERNATIONAL
CLIMATE
INITIATIVE



Celebrating 30 years of
integrated climate impact research
at the Potsdam Institute.

