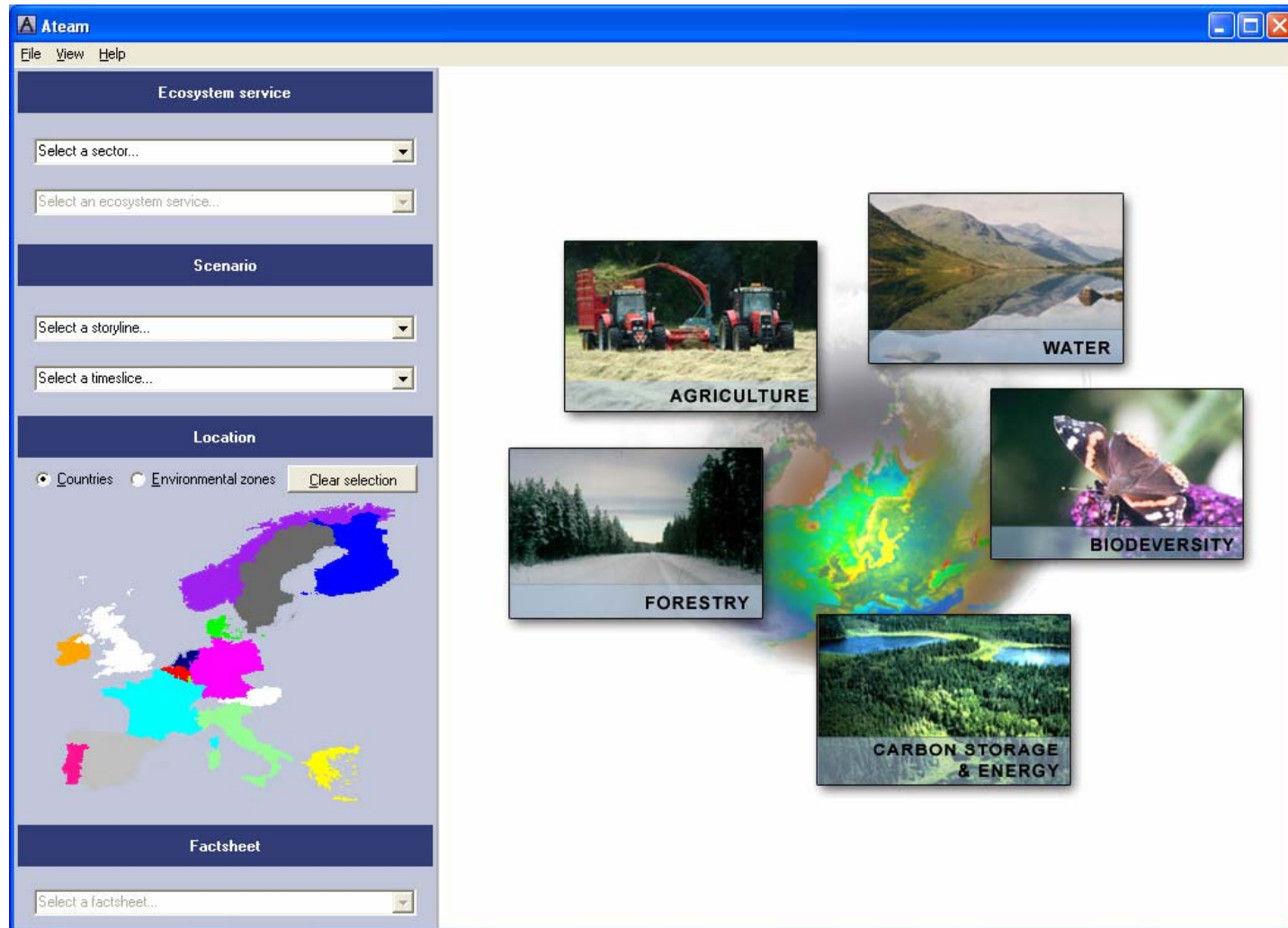


The ATEAM tool: a digital atlas for the ca. 3000 maps of the ATEAM project



On the left, you select a sector, ecosystem service, scenario and time slice.
The tool displays a factsheet for the vulnerability map.

The screenshot shows the Ateam software interface. On the left, there are four selection panels: 'Ecosystem service' with 'Agriculture' and 'Farmer livelihood' options; 'Scenario' with 'A1 - Global economic' and '2080' options; 'Location' with 'Countries' selected and a map of Europe; and 'Factsheet' with 'Vulnerability' selected. The main area on the right displays the 'Agriculture' factsheet for 'Europe' in '2080'. It includes a 'Vulnerability' map of Europe with a color scale from -100 (red) to 100 (green). The factsheet text describes the 'A1 - Global economic' scenario, the 'Farmer livelihood' ecosystem service, the 'Modeling' process, and the 'Data input' used.

Ateam
File View Help

Ecosystem service
Agriculture
Farmer livelihood

Scenario
A1 - Global economic
2080

Location
☒ Countries ☐ Environmental zones Clear selection

Factsheet
Vulnerability

Agriculture Europe 2080

A1 - Global economic
Main assumptions Slight population increase until 2050, then decrease Very rapid economic growth Increase in income Emphasis on market-oriented solutions (free trade) Environmental amenities are valued with increasing economic growth Focus on local environmental problems

Vulnerability
unitless
100
-100
- +

Farmer livelihood
Ecosystem service:
Total agriculture land area is an indicator for farmer livelihood in Europe: a reduced area means fewer farmers.
Modeling:
The ATEAM agriculture model is based on two steps: (1) a simple supply-demand model to assess the alternative changes in agricultural area quantities at the European scale and (2) the disaggregation of these quantities using scenario-specific spatial allocation rules.
Data input:
Baseline land use map (PELCOM), IMAGE 2.2. demand data, assessment on oversupply, quantification of the effects of changes in temperature and precipitation, effects of increasing atmospheric CO2 concentration, effects of technology development

A1
Main assumptions:
• Slight population increase until 2050, then decrease
• Very rapid economic growth
• Increase in income
• Emphasis on market-oriented solutions (free trade)
• Environmental amenities are valued with increasing economic growth
• Focus on local environmental problems

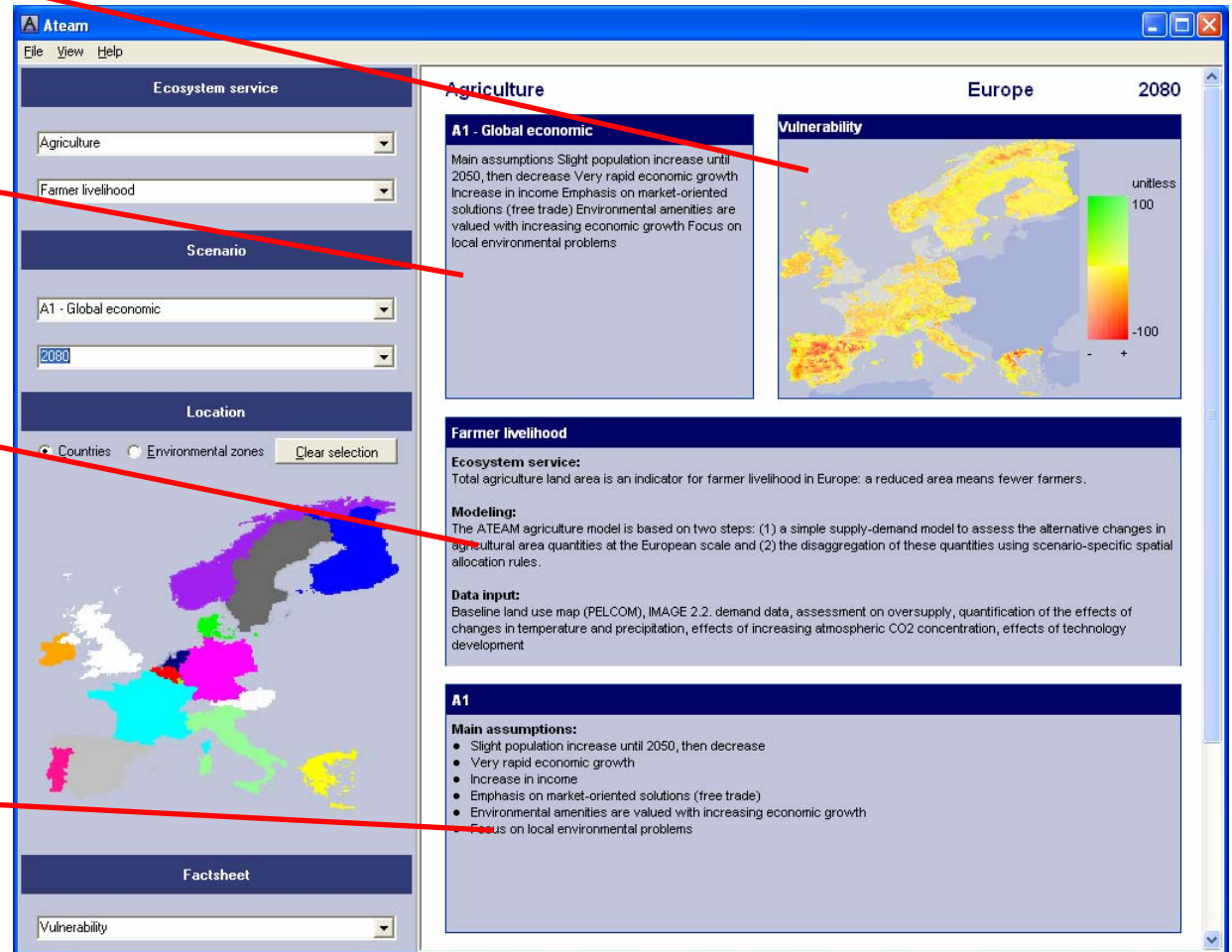
Elements of the factsheet

map

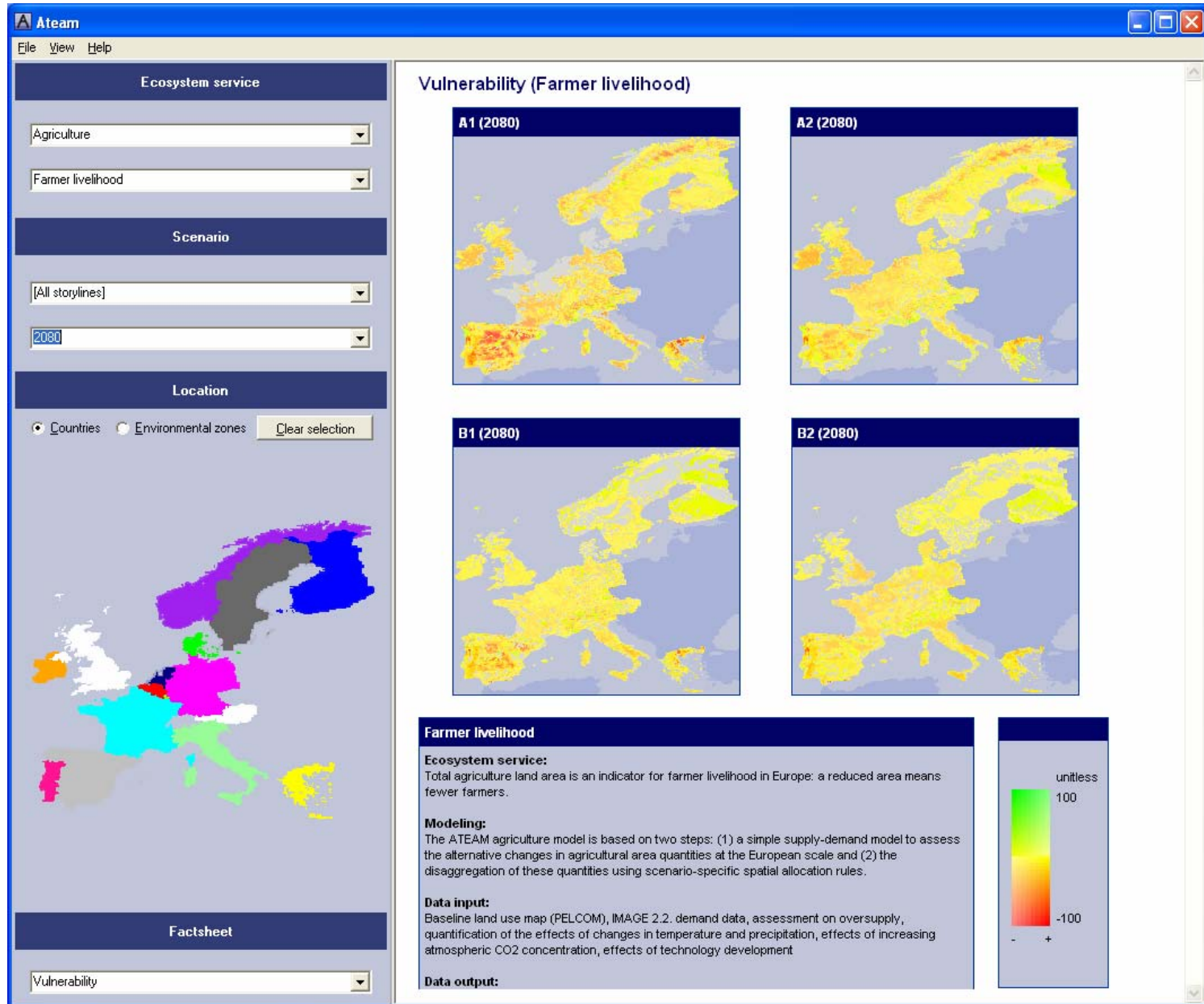
Scenario assumptions

Details about the ecosystem service

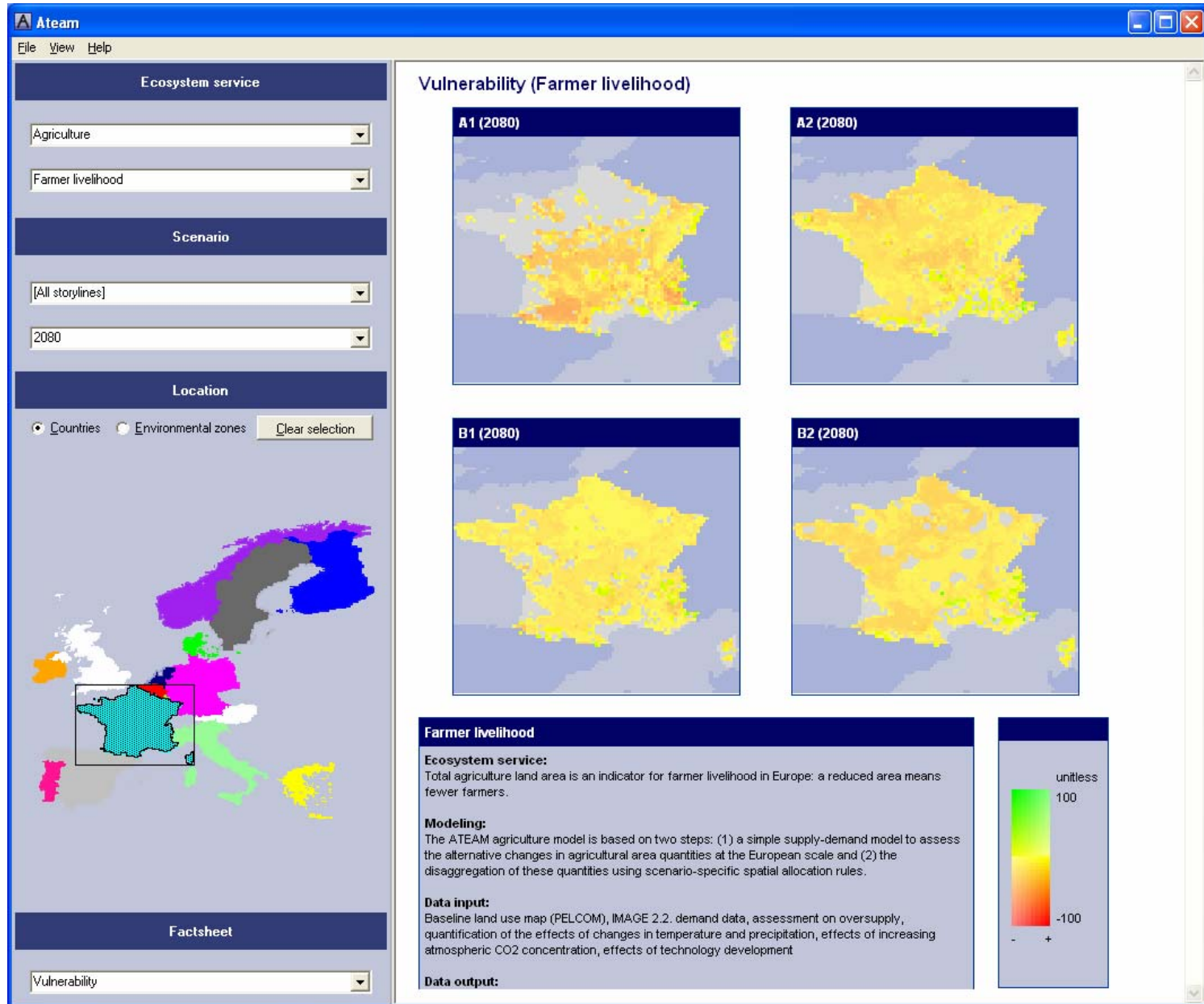
scenario implications for climate and land use



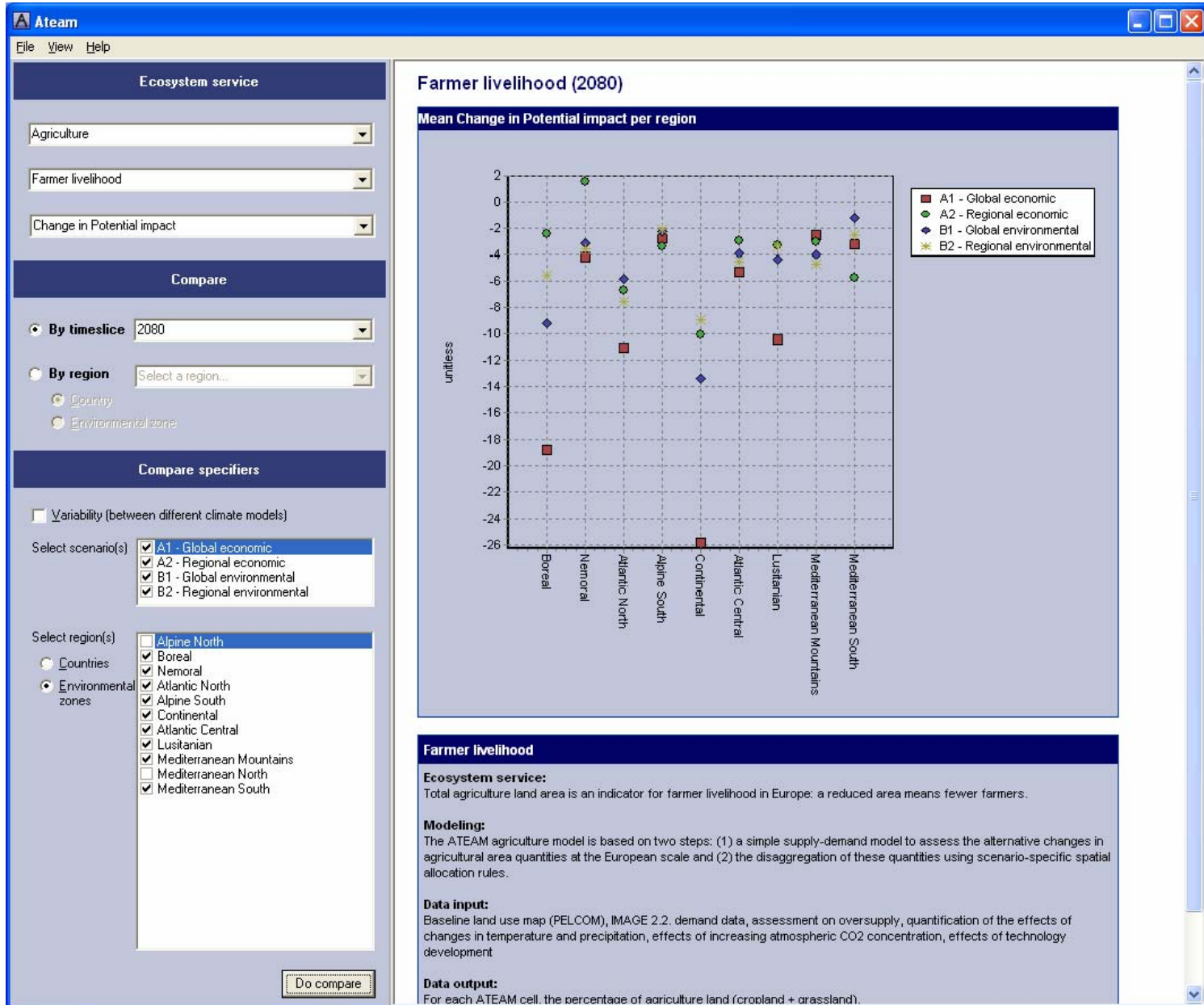
Display multiple scenarios



Zoom to regions (counties or environmental zones)



Analyze impacts per region



The ATEAM tool is in its final development stages.

For more information contact Marc Metzger (marc.metzger@wur.nl)

