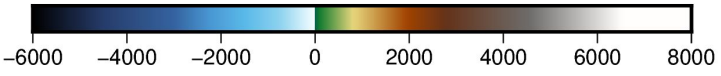
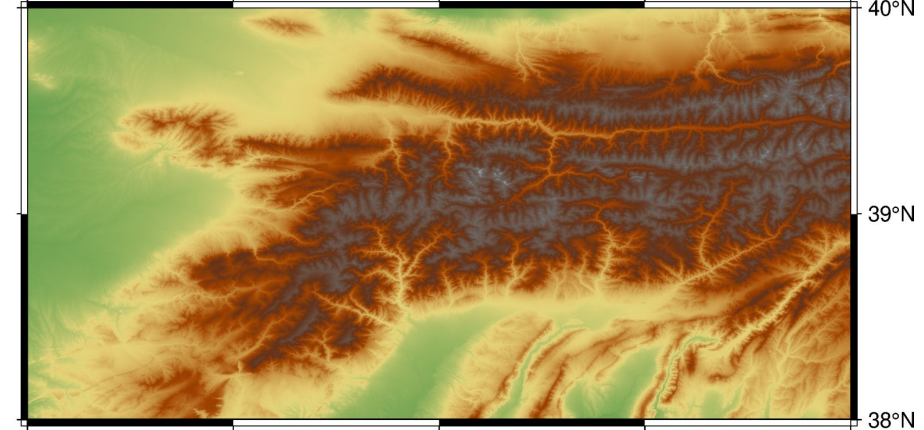
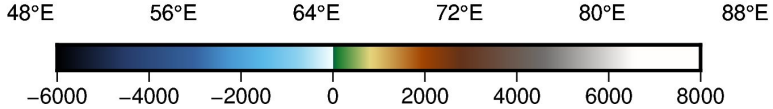
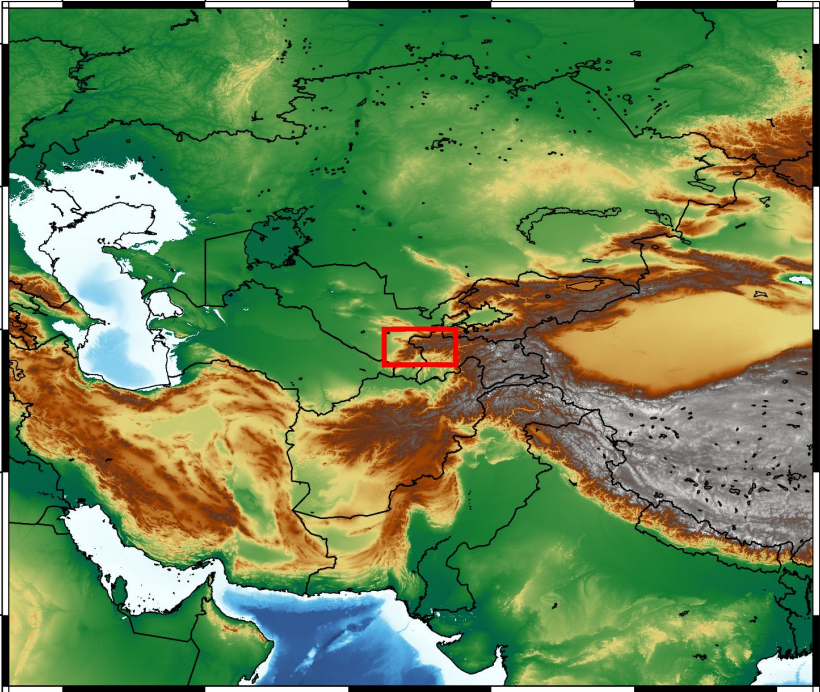
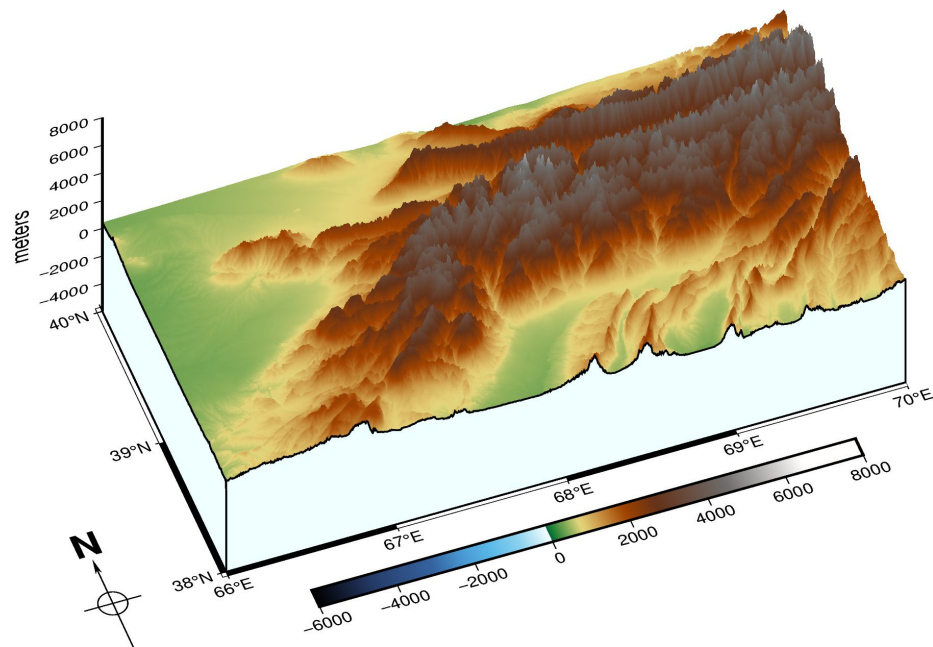
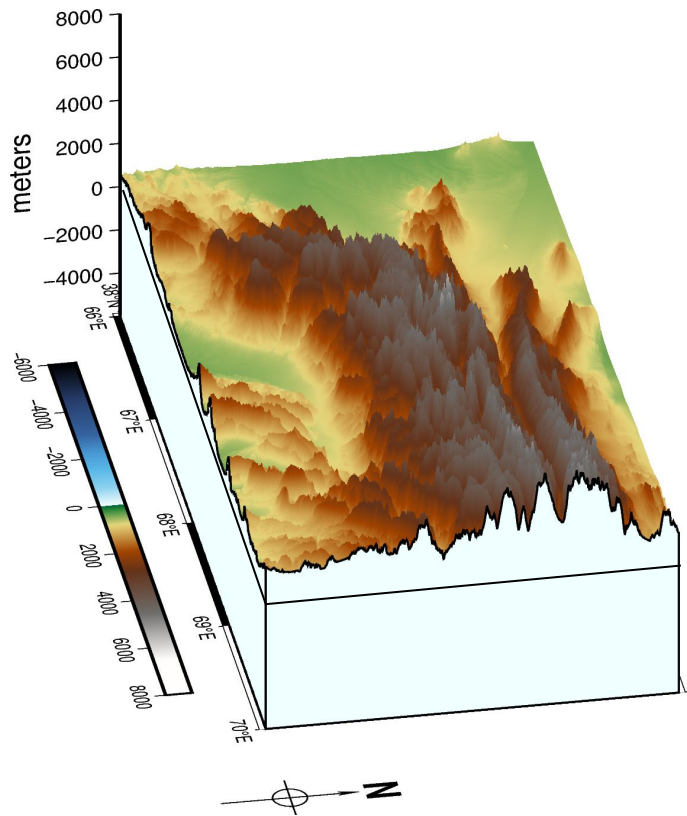


Towards Statistical
Downscaling of ISIMIP3b
for
Central Asia

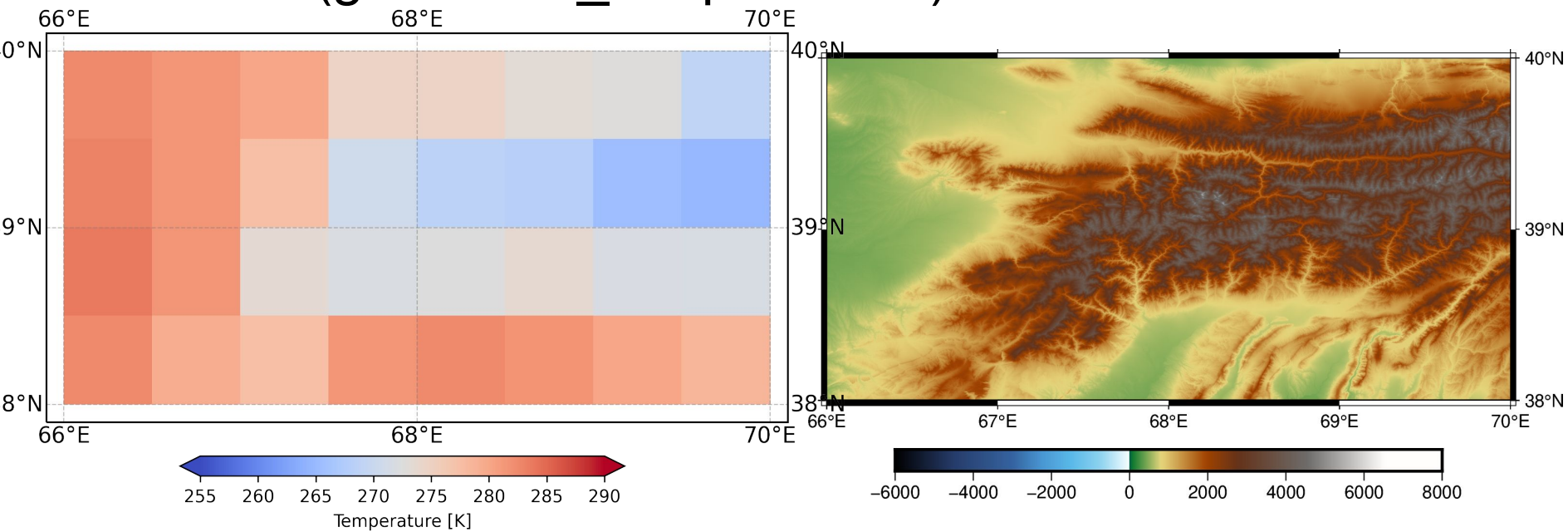
Example: Zarafshan



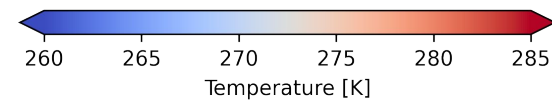
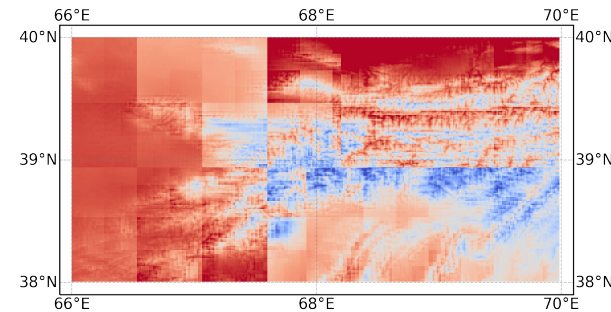
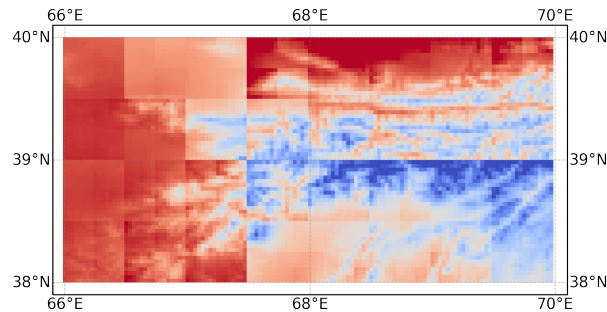
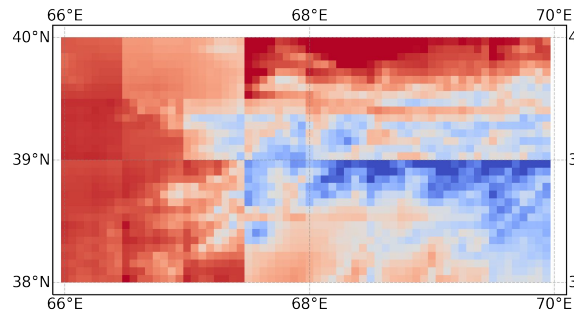
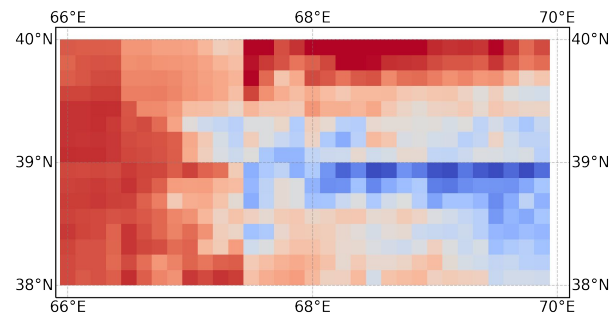
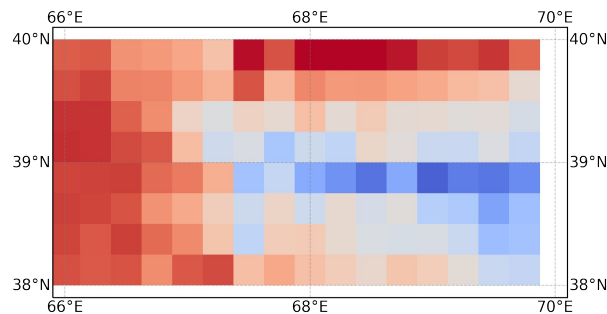
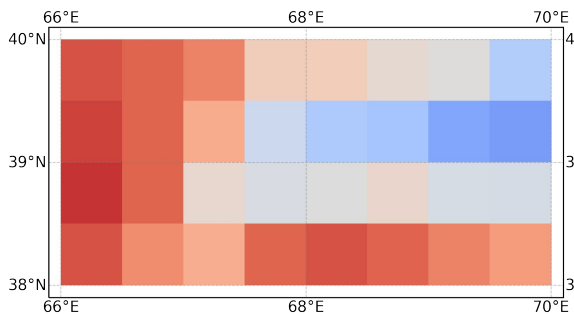
Complex Topography



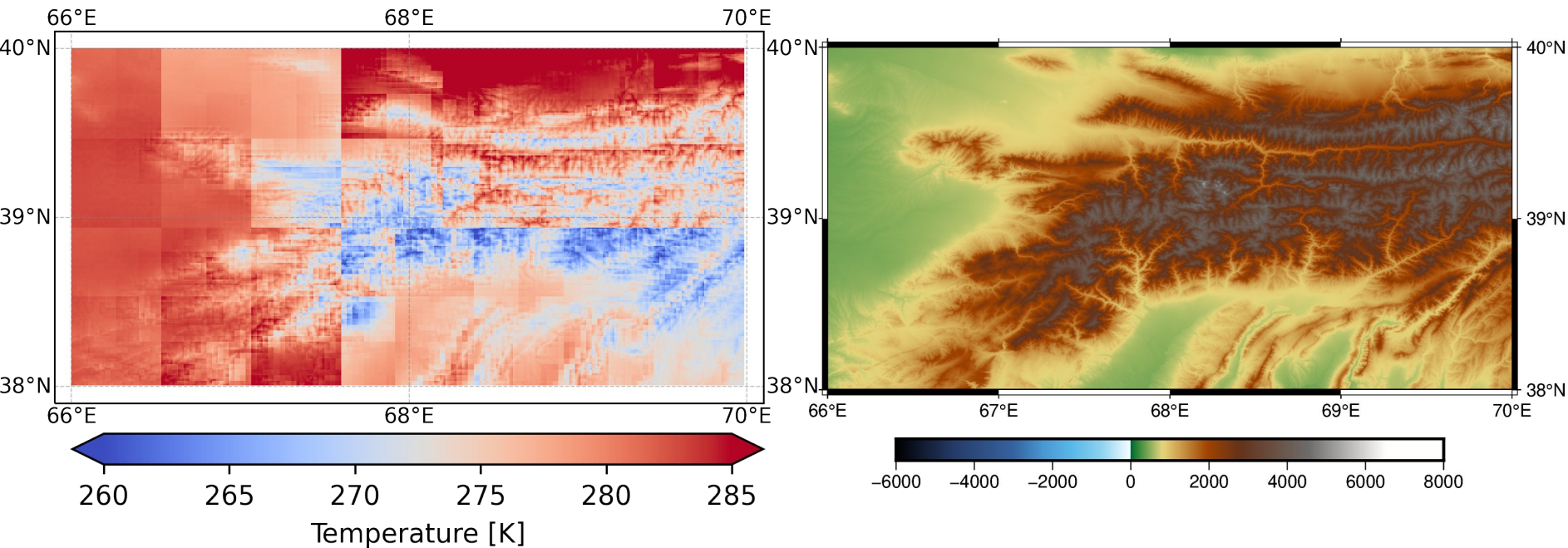
ISIMIP3b (gfdl-esm4_r1i1p1f1 TAS)



Downscaling with $\frac{1}{2}$ factor in six steps



ISIMIP3b_1km (gfdl-esm4_r1i1p1f1 TAS)



Outlook

1. Remove the artifacts
2. Apply for all models, scenarios, time-slices, variables
3. Feed the impact models?