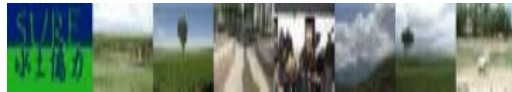


# Biodiesel in China: an analysis of the opportunities and challenges of Jatropha's plantation



LI Jia  
SURE project  
Environmental Policy Group  
Wageningen University



## Introduction

Recently a lot of countries are promoting the production of biofuels, but china stopped the production of producing biofuels from edible agriculture products in 2007. At the same time, Jatropha have been proposed as a promising raw material, because Jatropha which is a drought resistant and pest-resistant plant can grow on barren and marginal lands, thus Jatropha is considered to be an ideal alternative to produce biodiesel in china.

Since 2005, china have initiated the plantation of Jatropha and constructed the demonstration Jatropha forests. This act is called "Forestry-Oil integration" which covers 12 provinces. Up till now, the country have already planted 136 thousand hectares of bushy Jatropha trees, and this figure will increase gradually according to conservative government estimates.(SFA,2009)



Figure 1 Jatropha seeds and Jatropha demonstration base in Sichuan province

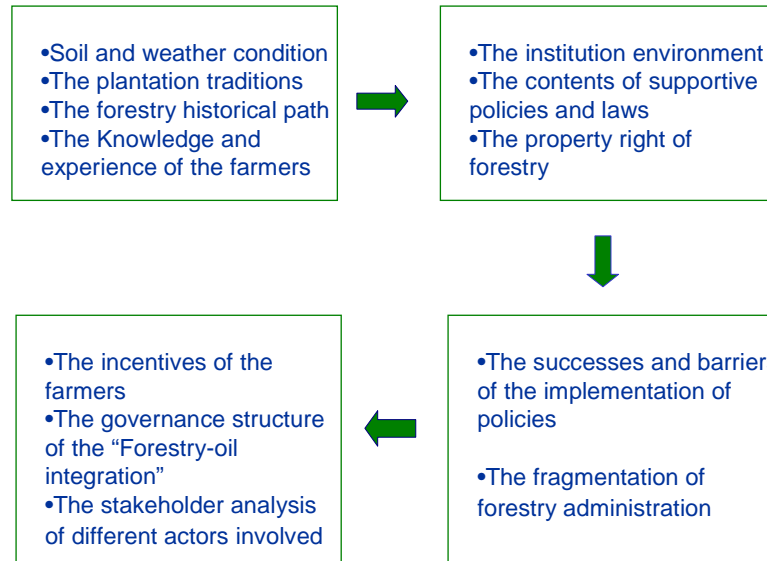
## Research Objectives

The main research objective is to study the success factors and constraints in access to the Jatropha's plantation.

- Which could be the crucial qualification criteria for choosing the demonstration base and cultivation area from the ecological and institution approaches?
- To what extent are the supportive policies well defined and implementing?
- What are the incentives toward the farmers to take part in the cultivation of Jatropha?
- What is the governance structure of the "forestry-oil integration" and how it works?

## Theoretical Framework

The general theoretical framework is based on the Williamson's four-level economics of institutions( Williamson, 1998 ). And focusing the objectives, the primary contents of the four parts are listed below.



## Fieldwork and Case Study

- Questionnaire
- Interview

## References

- SFA, 2009, *Working briefing of forestry biomass energy*, China, State Forestry Administration.
- Williamson, O.E., 1998, 'Transaction Cost Economics: How It Works; Where It is Headed,' *De Economist*, 146(1), p. 23-58.