

# Revitalizing Collaborative Forest Management

opportunities for empowerment and rural people income diversification toward sustainable teak forest management

## BACKGROUND

Java, where 64% of Indonesia population lives in, is only 6.5% of the total country area. This situation reflects to the lack of land ownership for agricultural activities and high competition for employment opportunities, while in the same time limited communication and infrastructure came out as results of imbalance development. In the other hand Perum Perhutani (PP), the state-owned forest company, manages 2.9 million hectare state forests in Java since early 1960's. As the sole forest manager, PP determines how the forests can be best utilised and managed, including dominant role to production forests for commercial purpose, with minor involvement of other stakeholders.

Due to the high forest looters between 1997 and 2000, PP developed a new program called Collaborative Forest Management with the Community (Pengelolaan Hutan Bersama Masyarakat or PHBM) in 2001. The program mostly focuses on forest security while in return the community receives 25% of benefit sharing from the wood production.

The "Levelling the Playing Field (LPF): Fair Partnership for Local Development to Improve the Forest Sustainability in Southeast Asia" project working in the context where multi-stakeholders, with different views and power, manage the renewable resources. Our central hypothesis is that forest is better managed in collaborative management, and forest management plan is taking into account rural people as key stakeholder.

Collaborative management means stakeholders are actively participating in managing the resources, with their roles and duties defined and their concerns addressed. Given the power imbalance among stakeholders, the project aims to: 1). improve forest management plan and practices by better coordination and communication, 2). generate better distribution of added values from forest, and 3). improve local livelihoods.

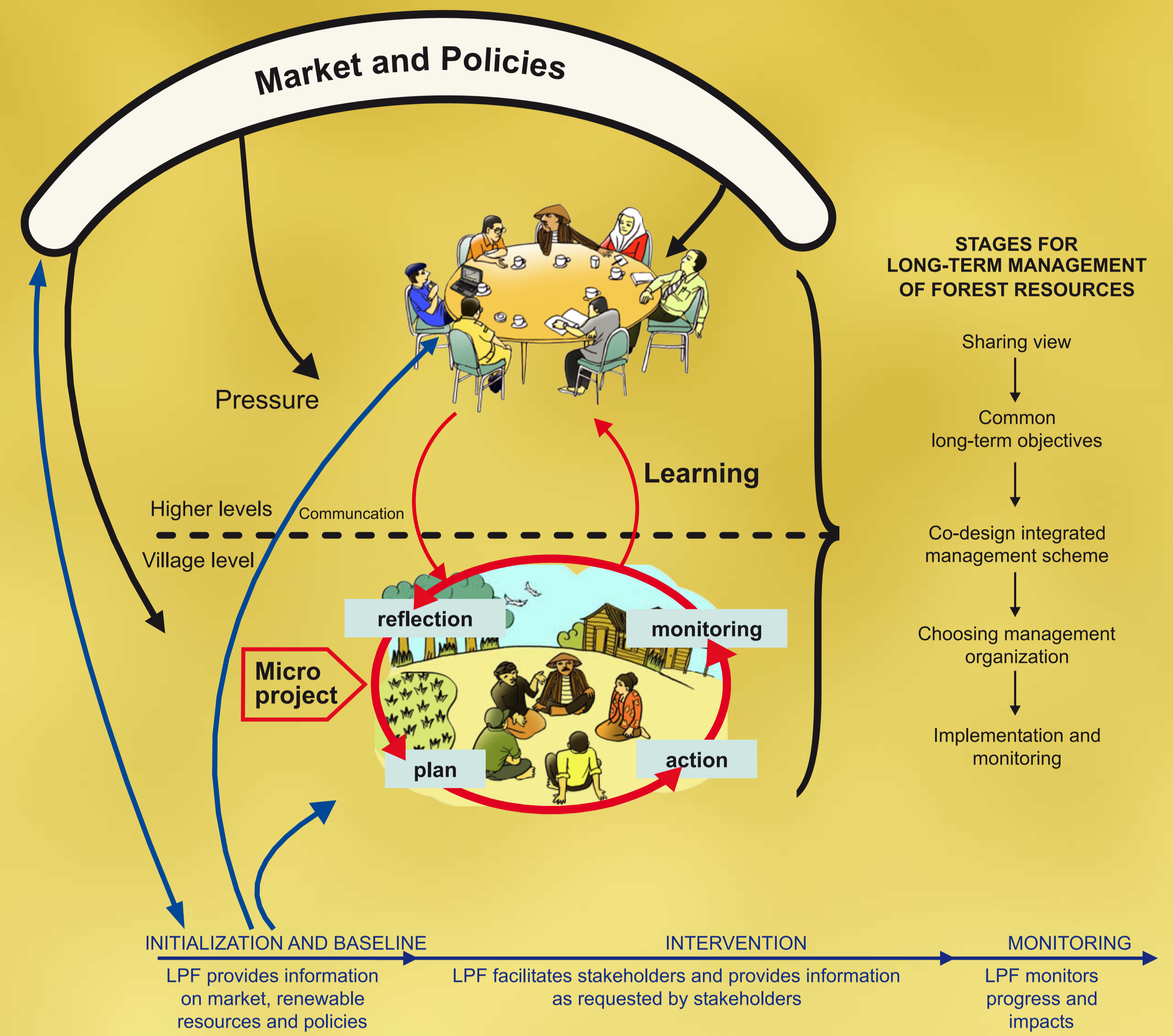
## PRELIMINARY RESULTS

- Collaborative forest management plan developed, agreed and implemented by both parties
- Strengthen capacity and skills for managing local institution
- Improved capacities of local community to (re)negotiate and come up with agreements both long and short terms
- Working group organized to implement collective actions
- Community micro-projects identified

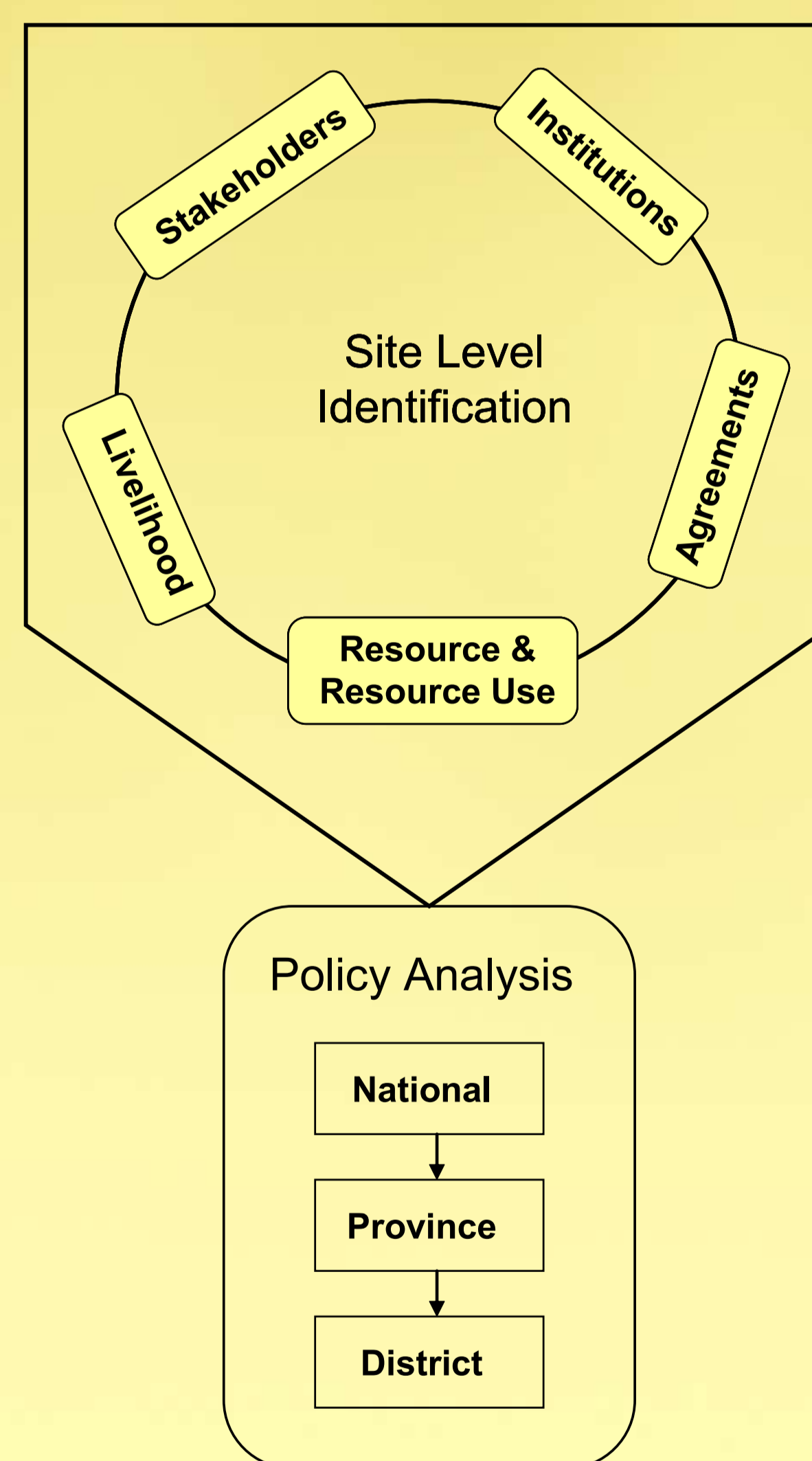
## ONGOING ACTIVITIES

- Providing capacity building for local institutions
- Developing proposal for micro projects
- Build effective forums for stakeholders to communicate and share views at village and district levels
- Developing guidelines and tools to facilitate collective action for better partnership
- Developing monitoring system for good partnership which designed in participatory way

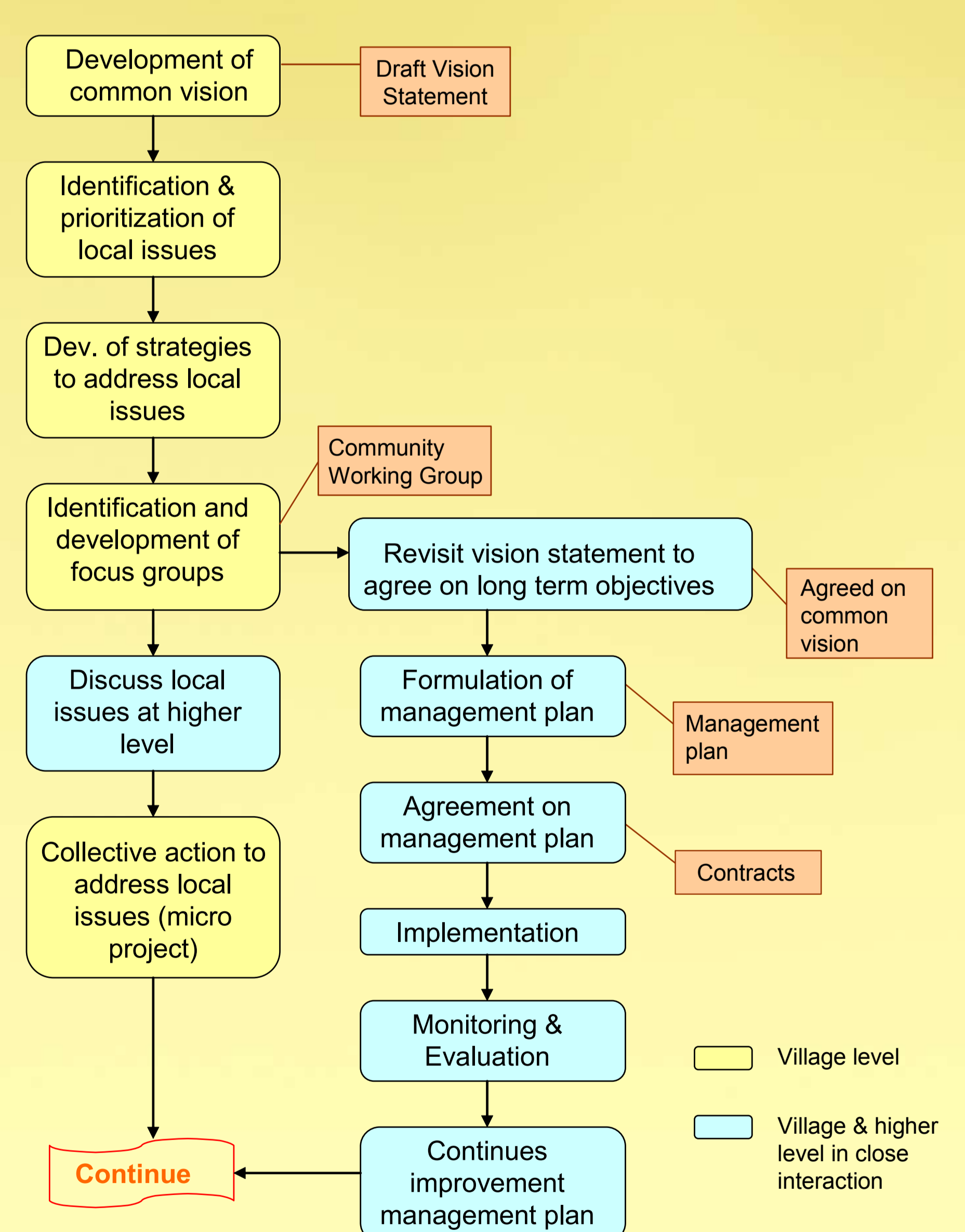
## FRAMEWORK



## BASELINE



## INTERVENTION



**Levania Santoso**

Center for International Forestry Research  
E-mail: L.Santoso@cgiar.org

